

## Rocker Cover Gaskets

Reusable, silicone!

- FAA-PMA Direct replacement for Continental and Lycoming Engines
- For use in certified and experimental aircraft

## Intake Manifold Tubes

550 Crossflow Style

- FAA-PMA Direct replacement for Continental Engines

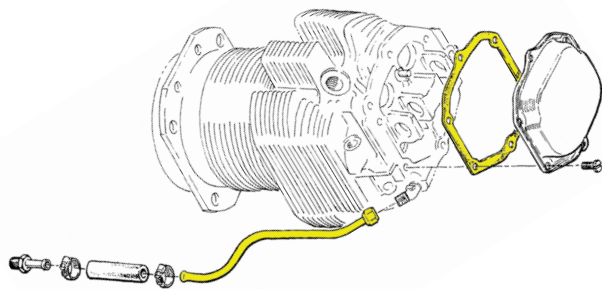
## Oil Drain-Back Tubes

Save up to 50%

- FAA-PMA direct replacement for Lycoming tubes
- For use in certified and experimental

Figure numbers referenced in eligibility table below

1  P/N APS-11935	2  P/N APS-68759	3  P/N APS-68760	4  P/N APS-68761	5  P/N APS-71737	6  P/N APS-72702
7  P/N APS-72703	8  P/N APS-73027	9  P/N APS-74808	10  P/N APS-653193-S	11  P/N APS-655528-S	12  P/N APS-655704-S
13  P/N APS-655705-S	14  P/N APS-655706-S	15  P/N APS-67193-S	16  P/N APS-71450-S	17  P/N APS-75906-S	18  P/N APS-76036-S



Intake Manifold Tubes						Oil Drain-Back Tubes						Rocker Cover Gaskets													
APS-633730 (Flange)	APS-646198 (#1 Cyl.)	APS-646199 (#2 Cyl.)	APS-646204 (#3 Cyl.)	APS-646205 (#4 Cyl.)	APS-646206 (#5 Cyl.)	APS-646207 (#6 Cyl.)	APS-646440 (Induction)	APS-11935 Fig. 1	APS-68759 Fig. 2	APS-68760 Fig. 3	APS-68761 Fig. 4	APS-71737 Fig. 5	APS-72702 Fig. 6	APS-72703 Fig. 7	APS-73027 Fig. 8	APS-74808 Fig. 9	APS-653193-S Fig. 10	APS-655528-S Fig. 11	APS-655704-S Fig. 12	APS-655705-S Fig. 13	APS-655706-S Fig. 14	APS-67193-S Fig. 15	APS-71450-S Fig. 16	APS-75906-S Fig. 17	APS-76036-S Fig. 18

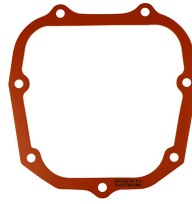
### Engine Model

#### Continental Engines

A-75, A-85, C90, C125, C145 Series																											
E165, E185, E225 Series																											
GO300	A,B,C,D,E,F																										
GTSIO520	C,D,F,H,K,L,M,N (C and F only applicable to APS-655705-S)	•																									
IO240, IO360 Series																											
IO470	J,K D,E,F,H,L,M,N,S,U,V																										
IO520 Series																											
IO550	A,B,C,D,E,F,L G,N,P,R	•	•	•	•	•	•																				
IO550F	N,P,R	•	•	•	•	•	•																				
LTSIO520	A,E																										
O200, O300 Series																											
O470	A,E,J G,K,L,R,S,U																										
TSIO360 Series																											
TSIO470	B,C																										
TSIO520	AF,CE,UB,B,BB,C,D,DB,E,EB,G,H,J,JB,K,KB,L, LB,M,N,NB,P,R,T,VB,WB BE	•	•	•	•	•	•																				
TSIO550	A,B,C,E,G,K	•	•	•	•	•	•																				
TSIOF550	D,J,K	•	•	•	•	•	•																				

Eligibility continued on next page

**Gaskets, Intake Manifold Tubes, and Oil Drain-Back Tubes continued from previous page**  
Eligibility continued from previous page



Oil Drain-Back Tubes									Rocker Cover Gaskets								
APS-11935 Fig. 1	APS-68759 Fig. 2	APS-68760 Fig. 3	APS-68761 Fig. 4	APS-71737 Fig. 5	APS-72702 Fig. 6	APS-72703 Fig. 7	APS-73027 Fig. 8	APS-74808 Fig. 9	APS-653193-S Fig. 10	APS-655528-S Fig. 11	APS-655704-S Fig. 12	APS-655705-S Fig. 13	APS-655706-S Fig. 14	APS-67193-S Fig. 15	APS-71450-S Fig. 16	APS-75906-S Fig. 17	APS-76036-S Fig. 18

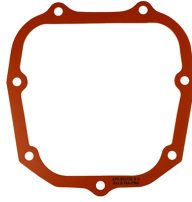
**Engine Model**

**Lycoming Engines**

A-40, A-50, A-65, A-70 Series																	
AEIO320	D1B,D2B,E1A,E1B,E2A,E2B																
AEIO360	A1A,A1B,A1B6																
	A1C																
	A1D,A1E,A1E6,A2B																
	A2A																
	A2C																
	A1D6,A2E,A3B6D																
	B1B,B1F,B1H,B1G6,B2F,B4A,H1A,H1B																
AEIO540	B1D,B1F6, B2F6																
	D4A5,D4B5,D4D5																
	D4C5																
AEIO580	L1B5,L1B5D,L1D5																
	B1A																
AIO320	A1A,A1B,A2A,A2B,B1B,C1B																
AIO360	A1A,A1B,B1B																
	A2A,A2B																
C75, C85 Series																	
GO435	C2																
HIO360	A1A,C1A																
	A1B,C1B,D1A,E1AD,E1BD,F1AD																
	B1A																
HIO540	B1B																
	A1A																
HO360	C1A																
	A1A,B1A																
IGO540	B1A,B1C																
IGSO540	A1A,A1C,A1D,A1E,A1H																
	B1A,B1C																
IHO360	B1A, G1A																
IO320	A1AA,2AB1A																
	A1AA2,AB1A																
	B1B,B1C,B1D,B1E,B2A,C1A,C1B,D1A,D1B,D1C,E1A,E1B,E2A,E2B,F1A																
IO360	A1A,A1B,A1B6,A1B6D,A1C,A1D,A1D6,A2A,A2B,A2C,A3B6,A3B6D,A3D6D,C1B,C1C,C1C6,C1D6,C1E6, C1E6D,C1G6,D1A,J1A6D,K2A																
	A1C6																
	A1D6D,C1F																
	B1B,B1BD,B1D,B1E,B1F,B1G6,B2E,B2F,B2F6,B4A,L2A,M1B,MIA																
	B1A,B1C,B1F6,E1A																
	C1A																
	F1A																
J1AD																	
IO390	A1A6,A3A6,A1B6,A3B6																
IO540	A1A5,B1B5,G1B5,G1C5,G1D5,G1E5,G1F5,K1C5,L1B5D,P1A5																
	AA1A5,AA1B5,AE1A5,K1A5,K1A5D,K1B5,K1D5,K1E5,K1F5,K1F5D,K1G5,K1G5D,K1J5,K1J5D,K1K5																
	AB1A5,C4B5,C4B5D,C4D5D,D4A5,N1A5,T4B5D,V4A5D,W1A5D																
	B1A5,B1C5,E1A5,E1B5																
	C1B5,C4C5,C4D5,R1A5,S1A5,T4A5D,T4B5,T4C5D																
	D4B5,D4C5,E4C5D,N1A5D,V4A5,W1A5,W1A5D,W3A5D																
IO540	G1A5																
	J4A5																

Eligibility continued on next page

**Gaskets, Intake Manifold Tubes, and Oil Drain-Back Tubes continued from previous page**  
**Eligibility continued from previous page**



Oil Drain-Back Tubes									Rocker Cover Gaskets								
APS-11935 Fig. 1	APS-68759 Fig. 2	APS-68760 Fig. 3	APS-68761 Fig. 4	APS-71737 Fig. 5	APS-72702 Fig. 6	APS-72703 Fig. 7	APS-73027 Fig. 8	APS-74808 Fig. 9	APS-653193-S Fig. 10	APS-655528-S Fig. 11	APS-655704-S Fig. 12	APS-655705-S Fig. 13	APS-655706-S Fig. 14	APS-67193-S Fig. 15	APS-71450-S Fig. 16	APS-75906-S Fig. 17	APS-76036-S Fig. 18

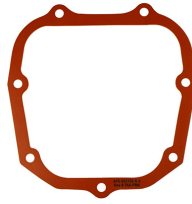
**Engine Model**

**Lycoming Engines continued from previous page**

IO540	K1H5																		
	K2A5,M1A5																		
	L1A5D																		
	L1C5																		
	M1A5D																		
	M1B5D																		
	UIA5D,U1B5D																		
IO580	A1A,B1A																		
IO720	A1A,A1B,D1B,D1C,D1CD																		
	B1B,B1BD,C1B																		
IVO540	A1A																		
LIHO360	C1A,C1B,F1AD																		
LIO320	B1A,C1A																		
LIO360	C1E																		
	C1E6																		
	C1E6D																		
	M1A																		
LO360	A1G6D A1H6																		
	E1AD,E1BD																		
LTIO540	F2BD,J2B,J2BD																		
	K1AD																		
	N2BD,R2AD																		
	U2A																		
	V2AD																		
	W2A																		
O235, O290 Series																			
O320	A1A,A1B,A2A,A2B,A2C,A2D,A3A,A3B,A3C,B1A,B1B,B2A,B2B,B2C,B2D,B2E,B3A,B3B,B3C,C1A,C1B,C2A,C2B,C2C,C3A,C3B,C3C,D1A,D1B,D1C,D1D,D1F,D2A,D2B,D2C,D2F,D2G,D2H,D2J,D3G,E1A,E1B,E1C,E1F,E1J,E2A,E2B,E2C,E2D,E2F,E2G,E2H,E3D,E3H,H1AD,H1BD,H2BD,H3AD,H3BD																		
O320 Series																			
O340	A1A,A2A,B1A																		
O340 Series																			
O360	A1A,A1AD,A1C,A1D,A1F6,A1F6D,A1G,A1G6,A1G6D,A1H,A1H6,A1J,A1LD,A1P,A2A,A2D,A2E,A2F,A2G,A3A,A3AD,A4A,A4AD,A4D,A4G,A4J,A4JD,A4K,A4M,A4N,A4P,A5AD,B2A,C1A,C1C,C1E,C1F,C1G,C2A,C2C,C2D,C2E,C4F,C4P,D2A,D2B,F1A6,G1A6																		
	A2H,A3D,B1A,B1B,B2B,B2C,E1AD,E1BD,E2AD,E2BD,J2A																		
O540	A1A,A1A5,A1B5,A1C5,A1D,A1D5,A2B,A3D5,B4B5,W1A5,W1A5D,W3A5D																		
	A4D5,E4B5D,G1A5D,J1C5D,J2A,J2A5D																		
	B1A5,B1B5,B2B5,B2C5,E4A5,E4B5,E4C5,F1B5,G1A5,G2A5,H1B5D,H2B5D,J1A5D,J3A5,J3A5D,J3C5D,L3C5D																		
B2A5																			
TIGO541	E1A																		
TIO360	A1A,A1B,A3B6																		
TIO540	A1A,A1B,A2A,A2B																		
	A1C,A2A																		
	A2C																		
	AE2A																		
	AH1A																		
	C1A,E1A,H1A																		
	AJ1A,AK1A,G1A,T2AD,W2A																		
	AA1AD,AB1AD,AF1A,AG1A,K1AD																		
	AB1BD,AF1B																		

**Eligibility continued on next page**

**Gaskets, Intake Manifold Tubes, and Oil Drain-Back Tubes continued from previous page**  
 Eligibility continued from previous page



Oil Drain-Back Tubes									Rocker Cover Gaskets								
APS-11935 Fig. 1	APS-68759 Fig. 2	APS-68760 Fig. 3	APS-68761 Fig. 4	APS-71737 Fig. 5	APS-72702 Fig. 6	APS-72703 Fig. 7	APS-73027 Fig. 8	APS-74808 Fig. 9	APS-653193-S Fig. 10	APS-655528-S Fig. 11	APS-655704-S Fig. 12	APS-655705-S Fig. 13	APS-655706-S Fig. 14	APS-67193-S Fig. 15	APS-71450-S Fig. 16	APS-75906-S Fig. 17	APS-76036-S Fig. 18

**Engine Model**

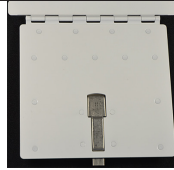
**Lycoming Engines continued from previous page**

TIO540	F2BD,J2B,J2BD,N2BD,R2AD,S1AD	•	•	•	•	•	•	•								
	U2A	•				•	•	•								
	V2AD	•														
TIO541	E1A4,E1B4,E1C4,EAD4													•		•
TIVO540	A2A													•		•
TO360	C1A6D													•		•
TVO435	A1A,B1A,B1B,D1A,D1B,F1A,G1A,G1B													•		
TVO540	A1A													•		
VO435	A1A,A1C,A1D,A1E,A1F,B1A													•		
VO540	A1A,B1A,B1B,B1B3,B1C,B1D,B1F,B2D,C1A,C1B,C1C3,C2A,C2C													•		

**Oil Access Door for Cessna Aircraft**

FAA-PMA approved P/N WAC752000

- Improved to better match the contour of the cowl
- More affordable than other replacement doors
- Replaces Cessna P/N 0752000-56



Model	Serial Number
180-180G	30000 thru 18051445
182-182G	33000 thru 18255844
185-185C	185-0001 thru 185-0776
210-210E	57001 thru 21058715

*Now manufactured by McFarlane!*

**Adel Clamps (MS21919 W Series)**

Loop type, cushioned support clamps, commonly referred to as "Adel Clamps" feature a wedge that is bonded to the cushion to prevent the escape of small wires when used for general purpose wire bundle clamping. Meets the requirements of Mil Spec MS21919.

**Standard MS21919WDGXX Clamps**

- Aluminum band with a chlorophrene cushion (black with blue stripe)
- For use in areas contaminated with petroleum based hydraulic fluids and occasional fuel splash
- Ozone resistant
- Rated to 212° F
- Not resistant to phosphate ester based fluids
- Supersedes MS21919-DG series without the wedge

**High Temperature MS21919WCJXX Clamps**

**Won't get hard and brittle with engine temperatures!**

- Corrosion resistant steel band with a blue fluorosilicone cushion
- Perfect for use in engine or other areas with elevated temperature and/or where petroleum based fluid contamination is present
- Ozone resistant
- Rated to 450° F
- Not resistant to phosphate ester based fluids

Tube/Bundle O.D. (in)	Aluminum Band Chlorophrene Cushion: MS21919WDG Series	Corrosion Resistant Steel Band, Fluorosilicone Cushion: MS21919WCJ Series
1/8	MS21919WDG2	MS21919WCJ2
3/16	MS21919WDG3	MS21919WCJ3
1/4	MS21919WDG4	MS21919WCJ4
5/16	MS21919WDG5	MS21919WCJ5
3/8	MS21919WDG6	MS21919WCJ6
7/16	MS21919WDG7	MS21919WCJ7
1/2	MS21919WDG8	MS21919WCJ8
9/16	MS21919WDG9	MS21919WCJ9
5/8	MS21919WDG10	MS21919WCJ10
11/16	MS21919WDG11	MS21919WCJ11
3/4	MS21919WDG12	MS21919WCJ12
13/16	MS21919WDG13	MS21919WCJ13
7/8	MS21919WDG14	MS21919WCJ14
15/16	MS21919WDG15	MS21919WCJ15
1	MS21919WDG16	MS21919WCJ16



P/N MS21919WCJ2



P/N MS21919WCJ3



P/N MS21919WCJ4



P/N MS21919WCJ5

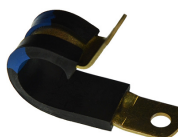


P/N MS21919WCJ7



P/N MS21919WCJ15

*A little more expensive but will last a long time in firewall forward applications!*



P/N MS21919WDG9



P/N MS21919WDG13



P/N MS21919WDG3



P/N MS21919WDG4