

Rocker Cover Gaskets

Reusable, silicone!

- FAA-PMA Direct replacement for Continental and Lycoming Engines
- For use in certified and experimental aircraft

Intake Manifold Tubes

550 Crossflow Style

- FAA-PMA Direct replacement for Continental Engines

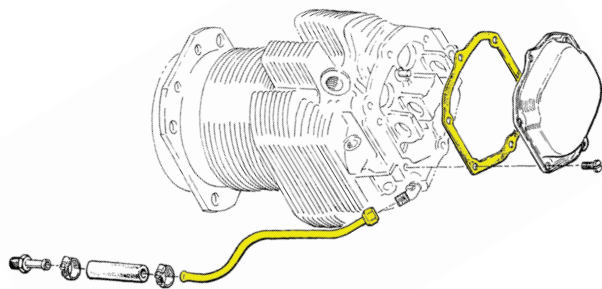
Oil Drain-Back Tubes

Save up to 50%

- FAA-PMA direct replacement for Lycoming tubes
- For use in certified and experimental

Figure numbers referenced in eligibility table below

1 P/N APS-11935	2 P/N APS-68759	3 P/N APS-68760	4 P/N APS-68761	5 P/N APS-71737	6 P/N APS-72702
7 P/N APS-72703	8 P/N APS-73027	9 P/N APS-74808	10 P/N APS-653193-S	11 P/N APS-655528-S	12 P/N APS-655704-S
13 P/N APS-655705-S	14 P/N APS-655706-S	15 P/N APS-67193-S	16 P/N APS-71450-S	17 P/N APS-75906-S	18 P/N APS-76036-S



Intake Manifold Tubes							Oil Drain-Back Tubes							Rocker Cover Gaskets											
APS-633730 (Flange)	APS-646198 (#1 Cyl.)	APS-646199 (#2 Cyl.)	APS-646204 (#3 Cyl.)	APS-646205 (#4 Cyl.)	APS-646206 (#5 Cyl.)	APS-646207 (#6 Cyl.)	APS-646440 (Induction)	APS-11935 Fig. 1	APS-68759 Fig. 2	APS-68760 Fig. 3	APS-68761 Fig. 4	APS-71737 Fig. 5	APS-72702 Fig. 6	APS-72703 Fig. 7	APS-73027 Fig. 8	APS-74808 Fig. 9	APS-653193-S Fig. 10	APS-655528-S Fig. 11	APS-655704-S Fig. 12	APS-655705-S Fig. 13	APS-655706-S Fig. 14	APS-67193-S Fig. 15	APS-71450-S Fig. 16	APS-75906-S Fig. 17	APS-76036-S Fig. 18

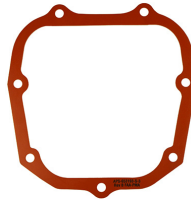
Engine Model

Continental Engines

A-75, A-85, C90, C125, C145 Series																											
E165, E185, E225 Series																											
GO300	A,B,C,D,E,F																										
GTSIO520	C,D,F,H,K,L,M,N (C and F only applicable to APS-655705-S)	•																									
IO240, IO360 Series																											
IO470	J,K D,E,F,H,L,M,N,S,U,V																										
IO520 Series																											
IO550	A,B,C,D,E,F,L G,N,P,R	•	•	•	•	•	•																				
IO550F	N,P,R	•	•	•	•	•	•																				
LTSIO520	A,E																										
O200, O300 Series																											
O470	A,E,J G,K,L,R,S,U																										
TSIO360 Series																											
TSIO470	B,C																										
TSIO520	AF,CE,UB,B,BB,C,D,DB,E,EB,G,H,J,JB,K,KB,L, LB,M,N,NB,P,R,T,VB,WB BE	•	•	•	•	•	•																				
TSIO550	A,B,C,E,G,K	•	•	•	•	•	•																				
TSIOF550	D,J,K	•	•	•	•	•	•																				

Eligibility continued on next page

Gaskets, Intake Manifold Tubes, and Oil Drain-Back Tubes continued from previous page
Eligibility continued from previous page



Oil Drain-Back Tubes									Rocker Cover Gaskets								
APS-11935 Fig. 1	APS-68759 Fig. 2	APS-68760 Fig. 3	APS-68761 Fig. 4	APS-71737 Fig. 5	APS-72702 Fig. 6	APS-72703 Fig. 7	APS-73027 Fig. 8	APS-74808 Fig. 9	APS-653193-S Fig. 10	APS-655528-S Fig. 11	APS-655704-S Fig. 12	APS-655705-S Fig. 13	APS-655706-S Fig. 14	APS-67193-S Fig. 15	APS-71450-S Fig. 16	APS-75906-S Fig. 17	APS-76036-S Fig. 18

Engine Model

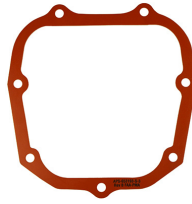
Lycoming Engines

A-40, A-50, A-65, A-70 Series

AEIO320	D1B,D2B,E1A,E1B,E2A,E2B																	
AEIO360	A1A,A1B,A1B6																	
	A1C																	
	A1D,A1E,A1E6,A2B																	
	A2A																	
	A2C																	
	A1D6,A2E,A3B6D																	
	B1B,B1F,B1H,B1G6,B2F,B4A,H1A,H1B																	
AEIO540	B1D,B1F6, B2F6																	
	D4A5,D4B5,D4D5																	
	D4C5																	
AEIO580	L1B5,L1B5D,L1D5																	
	B1A																	
AIO320	A1A,A1B,A2A,A2B,B1B,C1B																	
	A1A,A1B,B1B																	
AIO360	A2A,A2B																	
	C2																	
HIO360	A1A,C1A																	
	A1B,C1B,D1A,E1AD,E1BD,F1AD																	
	B1A																	
HIO540	B1B																	
	A1A																	
HO360	C1A																	
	A1A,B1A																	
IGO540	B1A,B1C																	
	A1A,A1C,A1D,A1E,A1H																	
IGSO540	B1A,B1C																	
	B1A, G1A																	
IO320	A1AA,2AB1A																	
	A1AA2,AB1A																	
	B1B,B1C,B1D,B1E,B2A,C1A,C1B,D1A,D1B,D1C,E1A,E1B,E2A,E2B,F1A																	
IO360	A1A,A1B,A1B6,A1B6D,A1C,A1D,A1D6,A2A,A2B,A2C,A3B6,A3B6D,A3D6D,C1B,C1C,C1C6,C1D6,C1E6, C1E6D,C1G6,D1A,J1A6D,K2A																	
	A1C6																	
	A1D6D,C1F																	
	B1B,B1BD,B1D,B1E,B1F,B1G6,B2E,B2F,B2F6,B4A,L2A,M1B,MIA																	
	B1A,B1C,B1F6,E1A																	
	C1A																	
	F1A																	
IO390	J1AD																	
	A1A6,A3A6,A1B6,A3B6																	
IO540	A1A5,B1B5,G1B5,G1C5,G1D5,G1E5,G1F5,K1C5,L1B5D,P1A5																	
	AA1A5,AA1B5,AE1A5,K1A5,K1A5D,K1B5,K1D5,K1E5,K1F5,K1F5D,K1G5,K1G5D,K1J5,K1J5D,K1K5																	
	AB1A5,C4B5,C4B5D,C4D5D,D4A5,N1A5,T4B5D,V4A5D,W1A5D																	
	B1A5,B1C5,E1A5,E1B5																	
	C1B5,C4C5,C4D5,R1A5,S1A5,T4A5D,T4B5,T4C5D																	
	D4B5,D4C5,E4C5D,N1A5D,V4A5,W1A5,W1A5D,W3A5D																	
	G1A5																	
J4A5																		

Eligibility continued on next page

Gaskets, Intake Manifold Tubes, and Oil Drain-Back Tubes continued from previous page
 Eligibility continued from previous page



Oil Drain-Back Tubes									Rocker Cover Gaskets								
APS-11935 Fig. 1	APS-68759 Fig. 2	APS-68760 Fig. 3	APS-68761 Fig. 4	APS-71737 Fig. 5	APS-72702 Fig. 6	APS-72703 Fig. 7	APS-73027 Fig. 8	APS-74808 Fig. 9	APS-653193-S Fig. 10	APS-655528-S Fig. 11	APS-655704-S Fig. 12	APS-655705-S Fig. 13	APS-655706-S Fig. 14	APS-67193-S Fig. 15	APS-71450-S Fig. 16	APS-75906-S Fig. 17	APS-76036-S Fig. 18

Engine Model

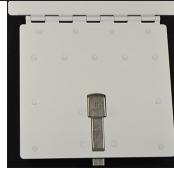
Lycoming Engines continued from previous page

TIO540	F2BD,J2B,J2BD,N2BD,R2AD,S1AD	•	•		•												
	U2A	•				•	•	•									
	V2AD	•															
TIO541	E1A4,E1B4,E1C4,EAD4													•			•
TIVO540	A2A													•			•
TO360	C1A6D													•			•
TVO435	A1A,B1A,B1B,D1A,D1B,F1A,G1A,G1B													•			
TVO540	A1A													•			
VO435	A1A,A1C,A1D,A1E,A1F,B1A													•			
VO540	A1A,B1A,B1B,B1B3,B1C,B1D,B1F,B2D,C1A,C1B,C1C3,C2A,C2C													•			

Oil Access Door for Cessna Aircraft

FAA-PMA approved P/N WAC752000

- Improved to better match the contour of the cowl
- More affordable than other replacement doors
- Replaces Cessna P/N 0752000-56



Model	Serial Number
180-180G	30000 thru 18051445
182-182G	33000 thru 18255844
185-185C	185-0001 thru 185-0776
210-210E	57001 thru 21058715

Now manufactured by McFarlane!

Adel Clamps (MS21919 W Series)

Loop type, cushioned support clamps, commonly referred to as "Adel Clamps" feature a wedge that is bonded to the cushion to prevent the escape of small wires when used for general purpose wire bundle clamping. Meets the requirements of Mil Spec MS21919.

Standard MS21919WDGXX Clamps

- Aluminum band with a chlorophrene cushion (black with blue stripe)
- For use in areas contaminated with petroleum based hydraulic fluids and occasional fuel splash
- Ozone resistant
- Rated to 212° F
- Not resistant to phosphate ester based fluids
- Supersedes MS21919-DG series without the wedge

High Temperature MS21919WCJXX Clamps

Won't get hard and brittle with engine temperatures!

- Corrosion resistant steel band with a blue fluorosilicone cushion
- Perfect for use in engine or other areas with elevated temperature and/or where petroleum based fluid contamination is present
- Ozone resistant
- Rated to 450° F
- Not resistant to phosphate ester based fluids

Tube/Bundle O.D. (in)	Aluminum Band Chlorophrene Cushion: MS21919WDG Series	Corrosion Resistant Steel Band, Fluorosilicone Cushion: MS21919WCJ Series
1/8	MS21919WDG2	MS21919WCJ2
3/16	MS21919WDG3	MS21919WCJ3
1/4	MS21919WDG4	MS21919WCJ4
5/16	MS21919WDG5	MS21919WCJ5
3/8	MS21919WDG6	MS21919WCJ6
7/16	MS21919WDG7	MS21919WCJ7
1/2	MS21919WDG8	MS21919WCJ8
9/16	MS21919WDG9	MS21919WCJ9
5/8	MS21919WDG10	MS21919WCJ10
11/16	MS21919WDG11	MS21919WCJ11
3/4	MS21919WDG12	MS21919WCJ12
13/16	MS21919WDG13	MS21919WCJ13
7/8	MS21919WDG14	MS21919WCJ14
15/16	MS21919WDG15	MS21919WCJ15
1	MS21919WDG16	MS21919WCJ16



P/N MS21919WCJ2



P/N MS21919WCJ3



P/N MS21919WCJ4



P/N MS21919WCJ5

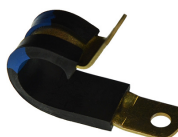


P/N MS21919WCJ7



P/N MS21919WCJ15

A little more expensive but will last a long time in firewall forward applications!



P/N MS21919WDG9



P/N MS21919WDG13



P/N MS21919WDG3



P/N MS21919WDG4