

---

## Service Bulletin

August 13, 2007

SEB07-6

### TITLE

ELEVATOR TRIM TAB ACTUATOR ASSEMBLY INSPECTION

### EFFECTIVITY

The following airplanes that have had a part number 1260074-1 replacement elevator trim tab actuator assembly installed that was shipped from Cessna Parts Distribution on October 2, 2006 through February 7, 2007:

<u>Model</u>	<u>Year</u>	<u>Serial Numbers</u>
150	1959	17001 thru 17999
150	1960	59001 thru 59018
150		617
150A	1961	15059019 thru 15059350
150A		628
150B	1962	15059351 thru 15059700
150C	1963	15059701 thru 15060087
150D	1964	15060088 thru 15060772
150E	1965	15060773 thru 15061532
150E		644
150F	1966	15061533 thru 15064532
150G	1967	15064533 thru 15064969
150G	1967	15064971 thru 15067198
150H	1968	15067199 thru 15069308
150H		649
150J	1969	15069309 thru 15071128
150K	1970	15071129 thru 15072003
150L	1971	15072004 thru 15072628
150L	1972	15072629 thru 15073658
150L	1973	15073659 thru 15074850
150L	1974	15074851 thru 15075781
150M	1975	15075782 thru 15077005
150M	1976	15077006 thru 15078505
150M	1977	15078506 thru 15079405

Page 1 of 18

To obtain satisfactory results, procedures specified in this publication must be accomplished in accordance with accepted methods and prevailing government regulations. Cessna Aircraft Company cannot be responsible for the quality of work performed in accomplishing the requirements of this publication.

A150K	1970	A1500001 thru A1500226
A150L	1971	A1500227 thru A1500276
A150L	1972	A1500277 thru A1500342
A150L	1973	A1500343 thru A1500429
A150L	1974	A1500430 thru A1500432
A150L	1974	A1500434 thru A1500523
A150M	1975	A1500524 thru A1500609
A150M		15064970
A150M	1976	A1500610 thru A1500684
A150M	1977	A1500685 thru A1500734
152	1978	15279406 thru 15282031
152	1979	15282032 thru 15283591
152	1980	15283592 thru 15284541
152	1981	15284542 thru 15285161
152	1982	15285162 thru 15285594
152	1983	15285595 thru 15285833
152	1984	15285834 thru 15285939
152	1985	15285940 thru 15286033
A152	1978	A1520735 thru A1520808
A152		A1500433
A152	1979	A1520809 thru A1520878
A152		681
A152	1980	A1520879 thru A1520943
A152	1981	A1520944 thru A1520983
A152	1982	A1520984 thru A1521014
A152	1983	A1521015 thru A1521025
A152	1984	A1521026 thru A1521027
A152	1985	A1521028 thru A1521049
172	1956 thru 1959	28000 thru 29999
172	1956 thru 1959	36000 thru 36999
172	1956 thru 1959	46001 thru 46754
172		610, 612, 615
172A	1960	46755 thru 47746
172A		622, 625
172B	1961	17247747 thru 17248734
172B		630
172C	1962	17248735 thru 17249544
172D	1963	17249545 thru 17250572
172E	1964	17250573 thru 17251822
172E		639
172F	1965	17251823 thru 17253392

172G	1966	17253393 thru 17254892
172H	1967	17254893 thru 17256492
172H	1967	17256494 thru 17256512
172H		638
172I	1968	17256513 thru 17257161
172J		660
172K	1969	17257162 thru 17258486
172K	1970	17258487 thru 17259223
172L	1971	17259224 thru 17259903
172L	1972	17259904 thru 17260758
172M	1973	17260759 thru 17261444
172M	1973	17261446 thru 17261577
172M	1973	17261579 thru 17261898
172M		17256493
172M	1974	17261899 thru 17263458
172M	1975	17263459 thru 17265684
172M	1976	17265685 thru 17267584
172N	1977	17267585 thru 17269309
172N		17261445
172N	1978	17269310 thru 17270049
172N	1978	17270051 thru 17271034
172N		17261578
172N	1979	17271035 thru 17272884
172N	1980	17272885 thru 17274009
172N		17270050
172P	1981	17274010 thru 17275034
172P	1982	17275035 thru 17275759
172P	1983	17275760 thru 17276079
172P	1984	17276080 thru 17276259
172P	1985	17276260 thru 17276516
172P	1986	17276517 thru 17276654
172Q	1983	17275869
172Q	1983	17275927 thru 17275934
172Q	1983	17275952, 17275959, 17275960
172Q	1983	17275962, 17275964, 17275965
172Q	1983	17275967, 17275968, 17275969
172Q	1983	17275971, 17275992, 17275999
172Q	1983	17276002, 17276005, 17276029
172Q	1983	17276032, 17276042, 17276045
172Q	1983	17276051, 17276052, 17276054
172Q	1984	17276101, 17276109, 17276140

172Q	1984	17276147, 17276188, 17276211
P172D	1963	P17257120 thru P17257188
R172K	1977	R1722000 thru R1722724
R172K	1978	R1722725 thru R1722929
R172K	1979	R1722930 thru R1723199
R172K		680
R172K	1980	R1723200 thru R1723399
R172K	1981	R1723400 thru R1723454
172RG	1980	172RG0001 thru 172RG0570
172RG	1981	172RG0571 thru 172RG0890
172RG		691
172RG	1982	172RG0891 thru 172RG1099
172RG	1983	172RG1100 thru 172RG1144
172RG	1984	172RG1145 thru 172RG1177
172RG	1985	172RG1178 thru 172RG1191
182E	1962	18253599 thru 18254423
182F	1963	18254424 thru 18255058
182G	1964	18255059 thru 18255844
182H	1965	18255846 thru 18256684
182H		634
182J	1966	18256685 thru 18257625
182K	1967	18257626 thru 18257698
182K	1967	18257700 thru 18258505
182K	1967	18255845
182L	1968	18258506 thru 18259305
182M		662
182M	1969	18259306 thru 18260055
182M		18257699
182N	1970	18260056 thru 18260445
182N	1971	18260446 thru 18260825
182P	1972	18260826 thru 18261425
182P	1973	18261426 thru 18262465
182P	1974	18262466 thru 18263475
182P	1975	18263476 thru 18263478
182P	1975	18263480 thru 18264295
182P		675
182P	1976	18264296 thru 18265175
182Q	1977	18265176 thru 18265965
182Q	1978	18265966 thru 18266590
182Q		18263479
182Q	1979	18266591 thru 18267300

182Q	1980	18267301
182Q	1980	18267303 thru 18267715
182R/T182	1981	18267716 thru 18268055
182R/T182		18267302
182R/T182	1982	18268056 thru 18268293
182R/T182	1983	18268294 thru 18268368
182R/T182	1984	18268369 thru 18268434
182R/T182	1985	18268435 thru 18268541
182R	1986	18268542 thru 18268586
R182		683
R182	1978	R18200002 thru R18200583
R182/TR182	1979	R18200584 thru R18201313
R182/TR182		R18200001
R182/TR182	1980	R18201314
R182/TR182	1980	R18201316 thru R18201628
R182/TR182	1981	R18201629 thru R18201798
R182/TR182	1982	R18201799 thru R18201928
R182/TR182	1983	R18201929 thru R18201973
R182/TR182	1984	R18201974 thru R18201999
R182/TR182	1985	R18202000 thru R18202031
R182/TR182		R18201315
R182/TR182	1986	R18202032 thru R18202039
210-5 (205)	1963	205-0001 thru 205-0480
210-5 (205)		641, 648
210-5 (205A)	1964	205-0481 thru 205-0577
206	1964	206-0001 thru 206-0275
U206	1965	U206-0276 thru U206-0437
U206A	1966	U206-0438 thru U206-0656
TU206A	1966	U206-0487 thru U206-0656
U206B/TU206B	1967	U206-0657 thru U206-0914
U206C/TU206C	1968	U206-0915 thru U206-1234
U206D/TU206D	1969	U206-1235 thru U206-1444
U206D/TU206D	1970	U20601445 thru U20601587
U206E/TU206E	1971	U20601588 thru U20601700
U206F/TU206F	1972	U20601701 thru U20601874
U206F/TU206F	1973	U20601875 thru U20602199
P206	1965	P206-0002 thru P206-0160
P206A	1966	P206-0161 thru P206-0306
TP206A	1966	P206-0161 thru P206-0306
P206B/TP206B	1967	P206-0307 thru P206-0419
P206C/TP206C	1968	P206-0420 thru P206-0519

P206D/TP206D	1969	P206-0520 thru P206-0603
P206E/TP206E	1970	P20600604 thru P20600647
P206E/TP206E		P206-0001
207/T207	1969	20700001 thru 20700148
207/T207	1970	20700149 thru 20700190
207/T207	1971	20700191 thru 20700205
207/T207	1972	20700206 thru 20700215
207/T207	1973	20700216 thru 20700227
210B	1962	21057841 thru 21058085
210C	1963	21058086 thru 21058139
210C	1963	21058141 thru 21058220
210D	1964	21058221 thru 21058510
210E	1965	21058511 thru 21058715
210F	1966	21058716 thru 21058818
210G	1967	21058819 thru 21058936
210H	1968	21058937 thru 21059061
210J	1969	21059062 thru 21059199
210K/T210K	1970	21059200 thru 21059351
210K/T210K	1971	21059352 thru 21059502
210L/T210L	1972	21059503 thru 21059719
210L/T210L	1973	21059720 thru 21060089
T210F	1966	T210-0001 thru T210-0083
A-150L	1972 thru 1973	A-1501001 thru A-1501039
A-A150L	1972 thru 1973	A-A1500001 thru A-A1500009
A182J	1966	A182-0001 thru A182-0056
A182K	1967	A182-0057 thru A182-0096
A182L	1968	A182-0097 thru A182-0116
A182N	1972	A182-0117 thru A182-0136
A182N	1974	A182-0137 thru A182-0146
A182N	1976	A182-0147 thru A182-0148
F150F	1966	F150-0001 thru F150-0067
F150G	1967	F150-0068 thru F150-0219
F150H	1968	F150-0220 thru F150-0389
F150J	1969	F150-0390 thru F150-0529
F150K	1970	F15000530 thru F15000658
F150L	1971	F15000659 thru F15000738
F150L	1972	F15000739 thru F15000863
F150L	1973	F15000864 thru F15001013
F150L	1974	F15001014 thru F15001143
F150M	1975	F15001144 thru F15001248
F150M	1976	F15001249 thru F15001338

F150M	1977	F15001339 thru F15001428
FA150K	1970	FA1500001 thru FA1500081
FA150L	1971	FA1500082 thru FA1500120
FRA150L	1972	FRA1500121 thru FRA1500166
FRA150L	1973	FRA1500167 thru FRA1500211
FRA150L	1974	FRA1500212 thru FRA1500261
FRA150M	1975	FRA1500262 thru FRA1500281
FRA150M	1976	FRA1500282 thru FRA1500311
FRA150M	1977	FRA1500312 thru FRA1500336
F152	1978	F15201429 thru F15201528
F152	1979	F15201529 thru F15201673
F152	1980	F15201674 thru F15201808
F152	1981	F15201809 thru F15201893
F152	1982	F15201894 thru F15201928
F152	1983	F15201929 thru F15201943
F152	1984	F15201944 thru F15201952
F152	1985	F15201953 thru F15201965
F152	1986	F15201966 thru F15201980
FA152	1978	FA1520337 thru FA1520347
FA152	1979	FA1520348 thru FA1520357
FA152	1980	FA1520358 thru FA1520372
FA152	1981	FA1520373 thru FA1520377
FA152	1982	FA1520378 thru FA1520382
FA152	1983	FA1520383 thru FA1520387
FA152	1985	FA1520388 thru FA1520415
FA152	1986	FA1520416 thru FA1520425
FP172	1963	FP172-0001 thru FP172-0003
F172D	1963	F172-0001 thru F172-0018
F172E	1964	F172-0019 thru F172-0085
F172F	1965	F172-0086 thru F172-0179
F172G	1966	F172-0180 thru F172-0319
F172H	1967	F172-0320 thru F172-0431
F172H	1967	F172-0436 thru F172-0442
F172H	1967	F172-0444 thru F172-0446
F172H	1968	F172-0432 thru F172-0435
F172H	1968	F172-0443
F172H	1968	F172-0447 thru F172-0559
F172H	1969	F172-0560 thru F172-0654
F172H	1970	F17200655 thru F17200754
F172K	1971	F17200755 thru F17200804
F172L	1972	F17200805 thru F17200904

F172M	1973	F17200905 thru F17201034
F172M	1974	F17201035 thru F17201234
F172M	1975	F17201235 thru F17201384
F172M	1976	F17201385 thru F17201514
F172N	1977	F17201515 thru F17201639
F172N	1978	F17201640 thru F17201749
F172N	1979	F17201750 thru F17201909
F172N	1980	F17201910 thru F17202039
F172P	1981	F17202040 thru F17202134
F172P	1982	F17202135 thru F17202194
F172P	1983	F17202195 thru F17202216
F172P	1984	F17202217 thru F17202233
F172P	1985	F17202234 thru F17202238
F172P	1986	F17202239 thru F17202254
FR172E	1968	FR17200001 thru FR17200060
FR172F	1969	FR17200061 thru FR17200145
FR172G	1970	FR17200146 thru FR17200225
FR172H	1971	FR17200226 thru FR17200275
FR172H	1972	FR17200276 thru FR17200350
FR172J	1973	FR17200351 thru FR17200440
FR172J	1974	FR17200441 thru FR17200530
FR172J	1975	FR17200531 thru FR17200559
FR172J	1976	FR17200560 thru FR17200590
FR172K	1977	FR17200591 thru FR17200620
FR172K	1978	FR17200621 thru FR17200630
FR172K	1979	FR17200631 thru FR17200655
FR172K	1980	FR17200656 thru FR17200665
FR172K	1981	FR17200666 thru FR17200675
F182P	1976	F18200001 thru F18200025
F182Q	1977	F18200026 thru F18200064
F182Q	1978	F18200065 thru F18200094
F182Q	1979	F18200095 thru F18200129
F182Q	1980	F18200130 thru F18200169
FR182	1978	FR18200001 thru FR18200020
FR182	1979	FR18200021 thru FR18200045
FR182	1980	FR18200046 thru FR18200070



The following airplanes that have had a part number 1260149-2 replacement elevator trim tab actuator assembly installed that was shipped from Cessna Parts Distribution on October 16, 2006 through February 5, 2007:

<u>Model</u>	<u>Year</u>	<u>Serial Numbers</u>
U206F/TU206F	1974	U20602200 thru U20602579
U206F/TU206F	1975	U20602580 thru U20602588
U206F/TU206F	1975	U20602590 thru U20603020
U206F/TU206F	1976	U20603021 thru U20603521
U206G/TU206G	1977	U20603522 thru U20604074
U206G/TU206G		676
U206G/TU206G	1978	U20604075 thru U20604649
U206G/TU206G	1979	U20604650 thru U20605309
U206G/TU206G		U20602589
U206G/TU206G	1980	U20605310 thru U20605919
U206G/TU206G	1981	U20605920 thru U20606439
U206G/TU206G	1982	U20606440 thru U20606699
U206G/TU206G	1983	U20606700 thru U20606788
U206G/TU206G	1984	U20606789 thru U20606846
U206G/TU206G	1985	U20606847 thru U20606920
U206G/TU206G	1986	U20606921 thru U20607020
207/T207	1974	20700228 thru 20700267
207/T207	1975	20700268 thru 20700314
207/T207	1976	20700315 thru 20700362
207A/T207A	1977	20700363 thru 20700414
207A/T207A	1978	20700415 thru 20700482
207A/T207A	1979	20700483 thru 20700562
207A/T207A	1980	20700563 thru 20700654
207A/T207A	1981	20700655 thru 20700729
207A/T207A	1982	20700730 thru 20700762
207A/T207A	1983	20700763 thru 20700767
207A/T207A	1984	20700768 thru 20700788
210L/T210L	1974	21060090 thru 21060539

Also affected are any part number 1260074-1 elevator trim tab actuator assemblies that were shipped from Cessna Parts Distribution on October 2, 2006 through February 7, 2007; and part number 1260149-2 elevator trim tab actuator assemblies that were shipped from Cessna Parts Distribution on October 16, 2006 through February 5, 2007 in Service Station stock.

**PURPOSE**

One report has been received of sheared groove pins on an elevator trim tab actuator chain sprocket. It has been determined that the affected elevator trim tab actuators shall have the groove pins replaced and the actuator assembly inspected as described in this Service Bulletin. Non-compliance with this Service Bulletin could allow the elevator trim tab actuator chain sprocket to come loose.

## COMPLIANCE

Mandatory: shall be accomplished at the next scheduled airplane inspection, not to exceed 50 hours of operation or 4 months, whichever occurs first.

## APPROVAL

FAA approval has been obtained on technical data in this publication that affects airplane type design.

## MAN-HOURS

0.3 man-hour for inspection to determine the elevator trim tab actuator assembly date

For airplanes without electric trim: If necessary, 5.7 man-hours for inspection, replacement of the groove pins, installation and rigging of the elevator trim tab actuator assembly

For airplanes with electric trim: If necessary, 6.9 man-hours for inspection, replacement of the groove pins, installation and rigging of the elevator trim tab actuator assembly

## MATERIAL

The parts below are available from Cessna Parts Distribution through an appropriate Cessna Service Station for the suggested list price shown.

<u>Part Number</u>	<u>Description</u>	<u>Qty/Airplane</u>		<u>Price</u>
0310332	Sprocket	1 (if required)	\$	29.50 (SE) ea
0310362-5	Screw Assembly	1 (if required)	\$	389.00 (I) ea
1260074-1	Actuator	1 (if required)	\$	1,299.00 (I) ea
1260113-1	Sprocket	1 (if required)	\$	171.65 (PS) ea
1260149-2	Actuator	1 (if required)	\$	1,651.00 (I) ea
GP3H094X0375-14	Groove Pin	2 (if required)	\$	0.62 (PS) ea MQ 25
GP3H094X0500-14	Groove Pin	2 (if required)	\$	0.64 (PS) ea MQ 25
MS21256-1	Locking Clip	4 (if required)	\$	0.38 (PS) ea MQ 100
MS24665-134	Cotter Pin	1 (if required)	\$	0.03 (PS) ea MQ 100
S3895-1	Bearing	1 (if required)	\$	69.80 (B) ea

ALL PRICES SUBJECT TO CHANGE WITHOUT NOTICE

## ACCOMPLISHMENT INSTRUCTIONS

### Change In Weight And Balance

Negligible

**Material Information**

The parts below may be necessary for airplanes not equipped with electric trim:

<b>NEW P/N</b>	<b>QUANTITY</b>	<b>DESCRIPTION</b>	<b>OLD P/N</b>	<b>DISPOSITION</b>
GP3H094X0375-14	2	Groove Pin	Same	Discard
MS21256-1	2	Locking Clip	Same	Discard
MS24665-134	1	Cotter Pin	Same	Discard
S3895-1	1	Bearing	Same	Discard
0310332	1	Sprocket	Same	Discard
0310362-5	1	Screw Assembly	Same	Discard
1260074-1	1	Actuator	Same	Discard

The parts below may be necessary for airplanes equipped with electric trim:

<b>NEW P/N</b>	<b>QUANTITY</b>	<b>DESCRIPTION</b>	<b>OLD P/N</b>	<b>DISPOSITION</b>
GP3H094X0500-14	2	Groove Pin	Same	Discard
MS21256-1	4	Locking Clip	Same	Discard
MS24665-134	1	Cotter Pin	Same	Discard
S3895-1	1	Bearing	Same	Discard
1260113-1	1	Sprocket	Same	Discard
0310362-5	1	Screw Assembly	Same	Discard
1260149-2	1	Actuator	Same	Discard

The material, or equivalent, listed in this table may be necessary.

<b>NAME</b>	<b>NUMBER</b>	<b>MANUFACTURER</b>	<b>USE</b>
Grease	MIL-G-21164C	Commercially Available	To lubricate the screw assembly

1. See if an affected elevator trim tab actuator assembly is installed. Review applicable airplane paperwork such as logbooks, and/or applicable work orders and sales/shipping receipts.
  - A. If an affected elevator trim tab actuator assembly is installed, go to Step 2.
  - B. If an affected elevator trim tab actuator assembly is not installed, go to Step 8.
  - C. If you cannot tell from airplane paperwork if an affected elevator trim tab actuator assembly is installed, go to Step 2.
2. Prepare the airplane for maintenance.
  - A. Make sure that all switches are in the OFF/NORM position.
  - B. Disconnect electrical power from the airplane.
    - (1) Disconnect the airplane battery.
    - (2) Disconnect external electrical power.
  - C. Attach maintenance warning tags to the battery and external power receptacle that have "**DO NOT CONNECT ELECTRICAL POWER - MAINTENANCE IN PROGRESS**" written on them.
3. Put a support stand under the tail to make sure that the tailcone does not fall while you do work in the tail of the airplane. (Refer to the applicable Service Manual.)
4. Get access to the elevator trim tab actuator assembly. (Refer to the applicable Service Manual and Illustrated Parts Catalog.)
5. (Refer to Figure 1 and 2, Detail C.) Use a mirror and a flashlight as necessary to find the part number decal on the 1260074-1 (airplanes not equipped with electric trim) or 1260149-2 (airplanes equipped with electric trim) Elevator Trim Tab Actuator Assembly.
 

**NOTE:** There are three lines of data on the part number decal. The part number of the elevator trim tab actuator assembly is shown on the top line, the date of manufacture is shown on the middle line, and the Universal Product Code (UPC) is shown on the bottom line.

  - A. If the date of manufacture on the middle line reads ASSY DATE: 4 Q 06, go to Step 6.
  - B. If the date of manufacture does not read ASSY DATE: 4 Q 06, go to Step 6T.
6. (Refer to Figure 1 and 2, Detail B.) Do an inspection of the elevator trim tab actuator assembly and replace the two groove pins as follows:
  - A. (Airplanes not equipped with electric trim) Get access to the turnbuckle for the manual elevator trim control cable. (Refer to the applicable Service Manual and Illustrated Parts Catalog.)
  - B. (Airplanes equipped with electric trim) Get access to the turnbuckle for the manual elevator trim control cable and the turnbuckle for the electric elevator trim control cable. (Refer to the applicable Service Manual and Illustrated Parts Catalog.)
  - C. Make marks at the positions of the different components (for example, chain to sprocket and screw to actuator positions) before you remove them to help later during installation and the rigging of the trim system.
  - D. Remove and discard the safety wire or locking clips and relieve cable tension at the turnbuckle.
 

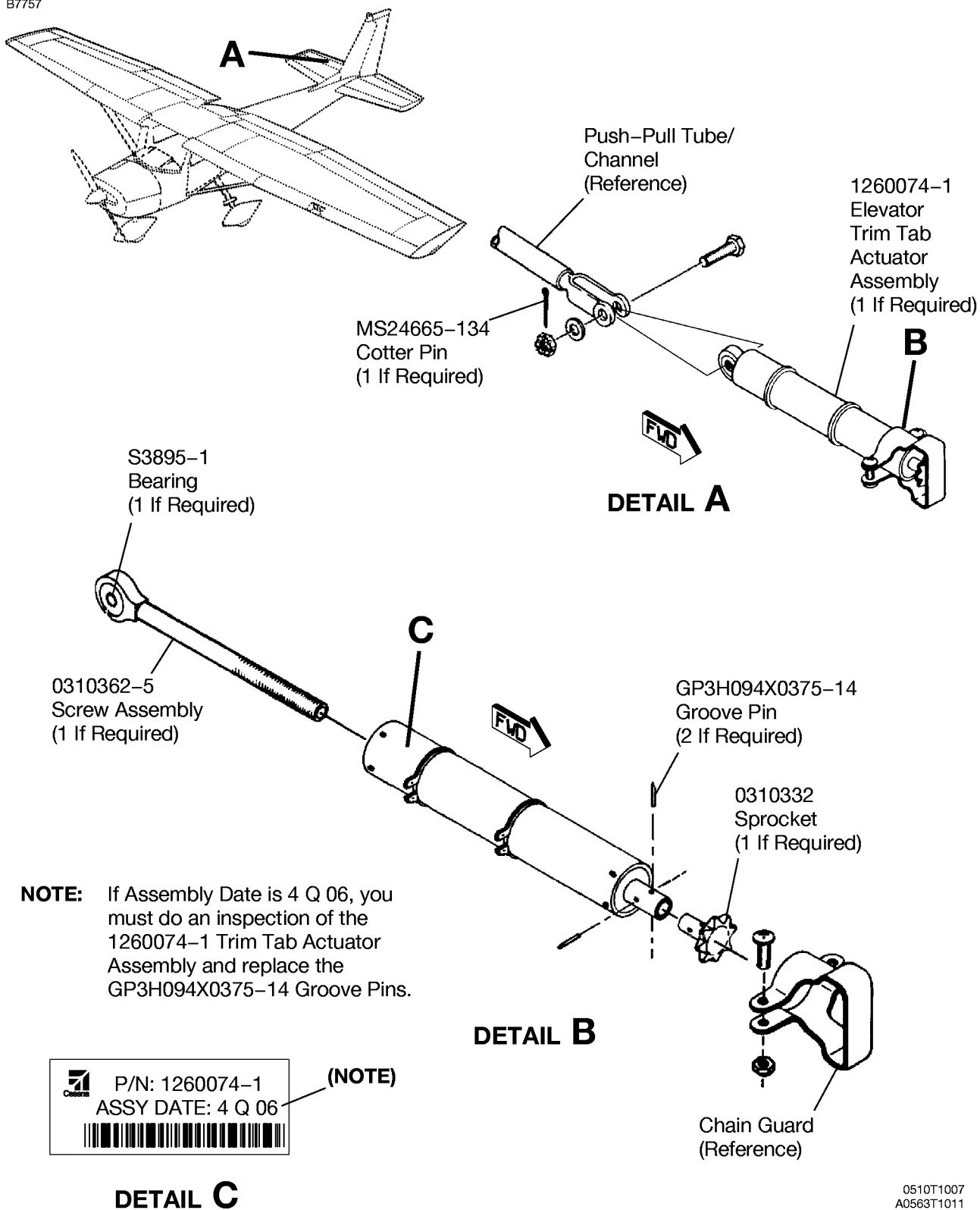
**NOTE:** There are two turnbuckles if the airplane is equipped with electric trim.
  - E. (Refer to Figure 1 and 2, Detail A.) At the elevator hinge gap, disconnect the push-pull tube/channel from the actuator screw assembly. Keep the attaching hardware and discard the cotter pin.
  - F. (Refer to Figure 1 and 2, Detail B.) Remove the chain guard from the trim tab actuator assembly. Keep the attaching hardware.

- G. Remove the chain (remove the two chains if the airplane is equipped with electric trim) from the actuator sprocket.
- H. (Refer to Figure 1 and 2, Detail A.) Remove and keep the attaching hardware that installs the elevator trim tab actuator assembly to the bracket, and carefully remove the elevator trim tab actuator assembly through the access area.
- I. (Refer to Figure 1 and 2, Detail B.) Remove and discard the two groove pins that attach the sprocket to the elevator trim tab actuator assembly.
- J. Do an inspection of the elevator trim tab actuator assembly as follows:
- (1) Turn the bearing in the screw assembly to make sure that it moves freely and smoothly.
  - (2) Remove the screw assembly and look at the threads to make sure that there is no damage.
  - (3) Make sure that there are no cracks in the screw assembly in the area of the bearing.
  - (4) Make sure that there are no bends in the screw assembly.
  - (5) If there is damage to the threads on the screw assembly, or if there are cracks or bends in the screw assembly, replace the 0310362-5 Screw Assembly.
  - (6) If the bearing does not move freely and smoothly in the screw assembly because of damage to the bearing, replace the S3895-1 Bearing.
  - (7) Examine the sprocket for broken, chipped, or bent teeth and install a 0310332 (airplanes not equipped with electric trim) or 1260113-1 (airplanes equipped with electric trim) Sprocket if necessary.
- K. Install the two new groove pins that attach the sprocket to the internal screw of the elevator trim tab actuator assembly.
- GP3H094X0375-14 Groove Pin (airplanes not equipped with electric trim)
  - GP3H094X0500-14 Groove Pin (airplanes equipped with electric trim).
- L. Examine the linear free play at the sprocket end of the housing on the elevator trim tab actuator assembly to make sure that it is not more than 0.010 inch. If the linear free play is more than 0.010 inch, install a new 1260074-1 (airplanes not equipped with electric trim) or 1260149-2 (airplanes equipped with electric trim) Elevator Trim Tab Actuator Assembly.
- M. Install the screw assembly in the elevator trim tab actuator assembly with MIL-G-21164C Grease. Hold the screw assembly and turn the sprocket to make sure that it turns freely and smoothly through the full range of travel.
- N. (Refer to Figure 1 and 2, Detail A.) Carefully put the elevator trim tab actuator assembly in position through the access area and attach the actuator assembly to the bracket with the kept attaching hardware.
- O. (Refer to Figure 1 and 2, Detail B.) Install the chain (or chains) that you removed from the actuator sprocket.
- P. At the elevator hinge gap, connect the elevator trim tab actuator assembly to the push-pull tube/channel with the kept attaching hardware and tighten with your hand.
- Q. Do the rigging of the trim system and install safety wire or MS21256-1 Locking Clips as applicable at the turnbuckle (or turnbuckles). (Refer to the applicable Service Manual and Illustrated Parts Catalog.)
- R. Install the chain guard with the kept attaching hardware.
- S. Tighten the nut and install the MS24665-134 Cotter Pin for the push-pull tube attach bolt nut.
- T. Install the equipment that you removed to get access to the elevator trim tab actuator assembly and the turnbuckle(s). (Refer to the applicable Service Manual and Illustrated Parts Catalog.)

7. Remove maintenance warning tags and connect the airplane battery.
8. Make an entry in the airplane logbook that states compliance and method of compliance with this Service Bulletin.

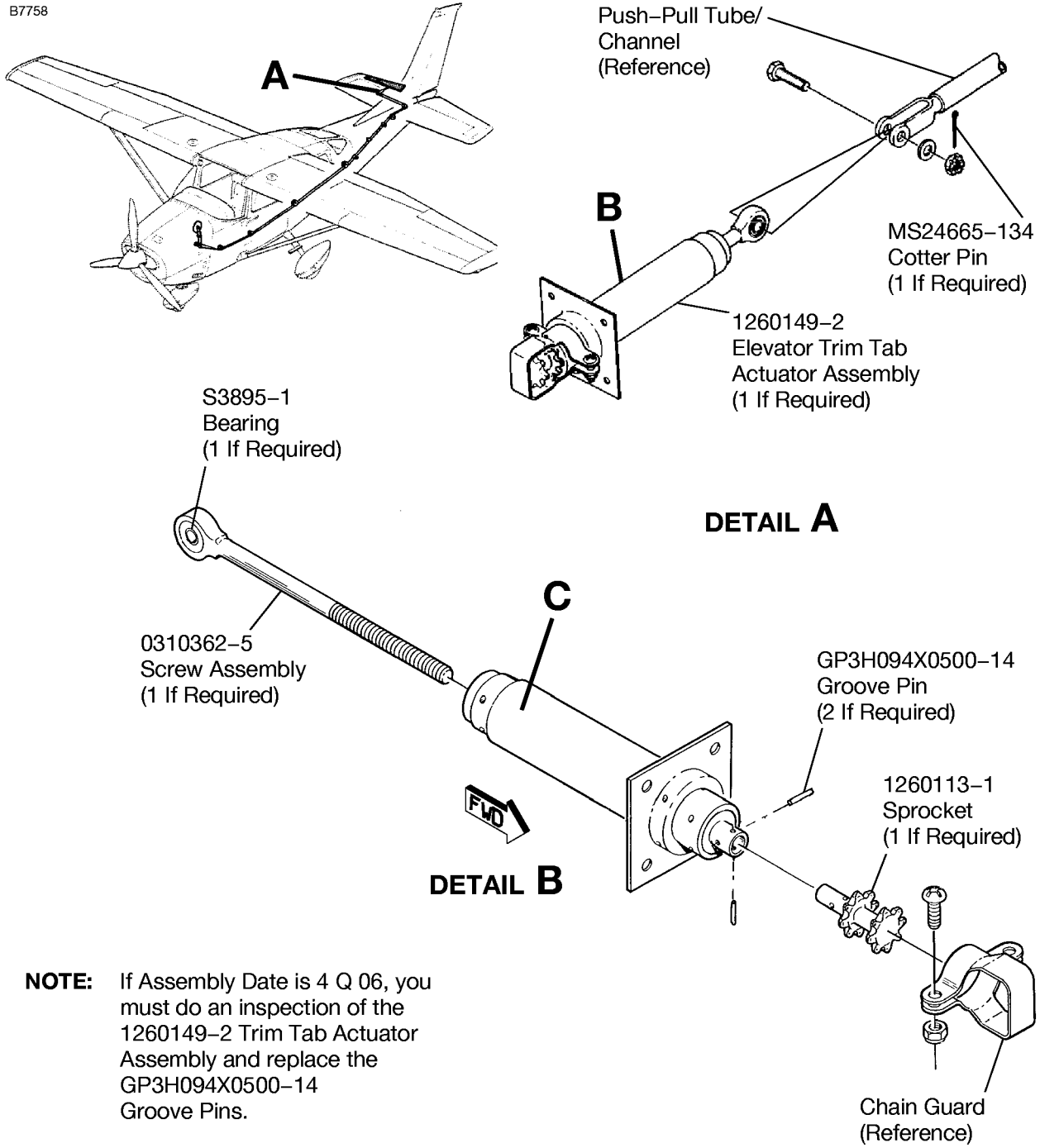
**NOTE:** This information shall be considered an amendment to the Cessna Manufacturer's Service/Maintenance Manual or Instructions for continued airworthiness and must be accomplished for ongoing airworthiness compliance as required per 14 CFR Part 43.13.

B7757



0510T1007  
A0563T1011  
B0563T1010

Figure 1. Elevator Trim Tab Actuator Assembly Inspection - Airplanes not Equipped with Electric Trim (Sheet 1)



**NOTE:** If Assembly Date is 4 Q 06, you must do an inspection of the 1260149-2 Trim Tab Actuator Assembly and replace the GP3H094X0500-14 Groove Pins.

	P/N: 1260149-2	(NOTE)
	ASSY DATE: 4 Q 06	

**DETAIL C**

1210T1001  
A1234T1026  
B1234T1008

Figure 2. Elevator Trim Tab Actuator Assembly Inspection - Airplanes Equipped with Electric Trim (Sheet 1)



**CREDIT**

The following parts and labor allowance credits will apply **after determining** that a part number 1260074-1 elevator trim tab actuator assembly **has been installed** that was shipped from Cessna Parts Distribution on October 2, 2006 through February 7, 2007; or that a part number 1260149-2 elevator trim tab actuator assembly **has been installed** that was shipped from Cessna Parts Distribution on October 16, 2006 through February 5, 2007.

A labor allowance credit of 0.3 man-hour per airplane will be provided for the determination inspection.

For airplanes without electric trim: If necessary, applicable parts credit and a labor allowance credit of 5.7 man-hours per airplane will be provided for inspection, replacement of the groove pins, installation and rigging of the elevator trim tab actuator assembly as described in this Service Bulletin.

For airplanes with electric trim: If necessary, applicable parts credit and a labor allowance credit of 6.9 man-hours per airplane will be provided for inspection, replacement of the groove pins, installation and rigging of the elevator trim tab actuator assembly as described in this Service Bulletin.

Actuators in Service Station stock: Any affected part number 1260074-1 elevator trim tab actuator assembly that was shipped from Cessna Parts Distribution on October 2, 2006 through February 7, 2007; or part number 1260149-2 elevator trim tab actuator assembly that was shipped from Cessna Parts Distribution on October 16, 2006 through February 5, 2007 shall be returned to Cessna for credit per standard procedures.

Freight will be credited at the most economical method unless pre-approved by Cessna. For pre-approval contact Cessna Parts Distribution Warranty Administration at Telephone: 316-831-4296, Fax: 316-206-2746 or E-mail: cpd2claims@cessna.textron.com.

To receive credit, the work must be completed and a Warranty Claim submitted by a Cessna Single Engine Service Station within 30 calendar days of Service Bulletin compliance before the credit expiration dates shown below. Any removed unusable elevator trim tab actuator assembly shall be returned with the Warranty Claim.

A copy of the logbook entry or entries are required that shows installation of the affected elevator trim tab actuator (part number 1260074-1 that was shipped from Cessna Parts Distribution on October 2, 2006 through February 7, 2007; or part number 1260149-2 that was shipped from Cessna Parts Distribution on October 16, 2006 through February 5, 2007) and shall be included with the Warranty Claim.

Domestic . . . . . April 13, 2008  
International . . . . . April 13, 2008

**Special Note to Service Stations:**

When you complete the Warranty Claim, the labor allowance claimed shall be itemized for each above action completed.

**OWNER NOTIFICATION**

On August 13, 2007 the following message will be sent to applicable owners of record in SEB07-6A.

Dear Cessna Owner:

This Owner Advisory is to inform you that SEB07-6: Elevator Trim Tab Actuator Assembly Inspection has been issued.

One report has been received of sheared groove pins on an elevator trim tab actuator chain sprocket. It has been determined that the affected elevator trim tab actuators shall have the groove pins replaced and the actuator assembly inspected as described in SEB07-6.

The affected elevator trim tab actuators are: part number 1260074-1 that was shipped from Cessna Parts Distribution on October 2, 2006 through February 7, 2007; or part number 1260149-2 that was shipped from Cessna Parts Distribution on October 16, 2006 through February 5, 2007.

Non-compliance with SEB07-6 could allow the elevator trim tab actuator chain sprocket to come loose.

Compliance is mandatory: shall be accomplished at the next scheduled airplane inspection, not to exceed 50 hours of operation or 4 months, whichever occurs first.

The information contained in the referenced Cessna Service Bulletin shall be considered an amendment to the Cessna Manufacturer's Service/Maintenance Manual or Instructions for continued airworthiness, and must be accomplished for ongoing airworthiness compliance as required per 14 CFR Part 43.13.

The following parts and labor allowance credits will apply **after determining** that a part number 1260074-1 elevator trim tab actuator assembly **has been installed** that was shipped from Cessna Parts Distribution on October 2, 2006 through February 7, 2007; or that a part number 1260149-2 elevator trim tab actuator assembly **has been installed** that was shipped from Cessna Parts Distribution on October 16, 2006 through February 5, 2007.

A labor allowance credit of 0.3 man-hour per airplane will be provided for the determination inspection.

For airplanes without electric trim: If necessary, applicable parts credit and a labor allowance credit of 5.7 man-hours per airplane will be provided for inspection, replacement of the groove pins, installation and rigging of the elevator trim tab actuator assembly as described in this Service Bulletin.

For airplanes with electric trim: If necessary, applicable parts credit and a labor allowance credit of 6.9 man-hours per airplane will be provided for inspection, replacement of the groove pins, installation and rigging of the elevator trim tab actuator assembly as described in this Service Bulletin.

Freight will be credited at the most economical method unless pre-approved by Cessna. For pre-approval contact Cessna Parts Distribution Warranty Administration at Telephone: 316-831-4296, Fax: 316-206-2746 or E-mail: cpd2claims@cessna.textron.com.

To receive credit, the work must be completed and a Warranty Claim submitted by a Cessna Single Engine Service Station within 30 calendar days of Service Bulletin compliance before the credit expiration dates shown below.

A copy of the logbook entry or entries are required that shows installation of the affected elevator trim tab actuator (part number 1260074-1 that was shipped from Cessna Parts Distribution on October 2, 2006 through February 7, 2007; or part number 1260149-2 that was shipped from Cessna Parts Distribution on October 16, 2006 through February 5, 2007) and shall be included with the Warranty Claim.

Domestic . . . . . April 13, 2008  
International . . . . . April 13, 2008

Please contact a Cessna Single Engine Service Station for detailed information and arrange to have Cessna Service Bulletin SEB07-6 accomplished on your airplane.

\* \* \* \* \*

