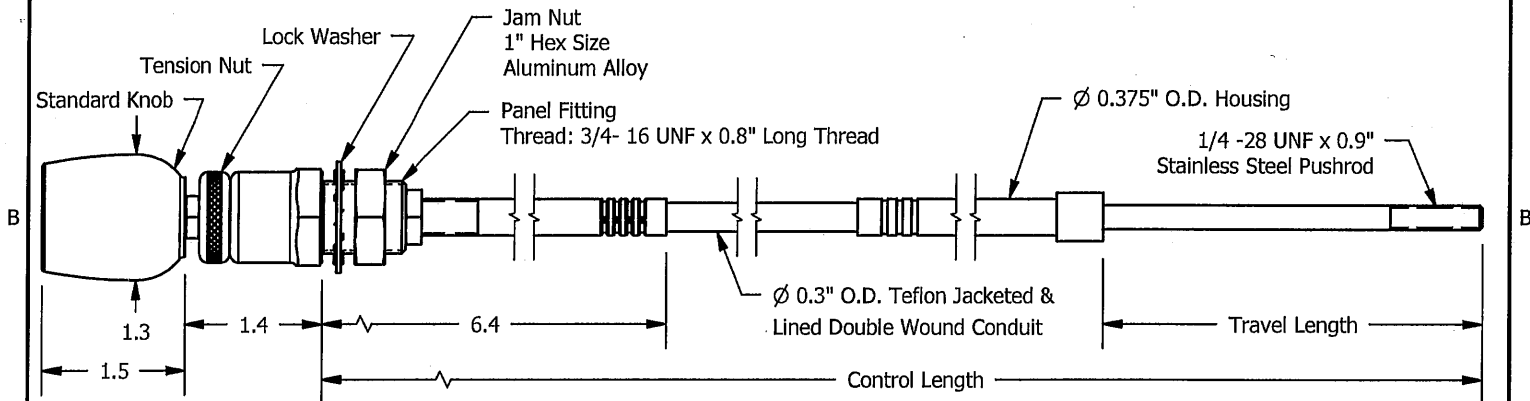


REVISION

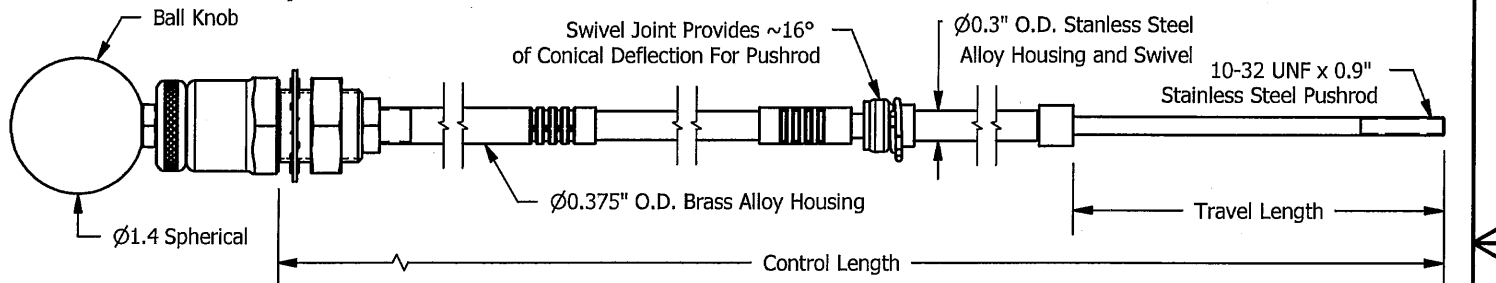


~	6/28/2011	ORIGINAL
A	07/16/2013	UPDATED 1/4" THREAD NOTE

P/N: MCTV2035-LLL-XX SERIES NON-SWIVEL TYPE THROTTLE



P/N: MCTV1035-LLL-XX SERIES SWIVEL TYPE THROTTLE



Specifications:

Part Numbers MCTVX035-LLL- XX where:

X = Number refers to the push rod type (1 = 10-32 UNF pushrod with swivel, 2 = 1/4-28 UNF pushrod without swivel)

LLL = Control length in inches

- X = Knob options (Blank indicates standard knob, B indicates the ball knob configuration)

Travel (stroke): 3.5" Standard with any additional length available for custom controls.

Maximum Design Resistance Loads: (With Tension Nut fully engaged)

Push/Pull: ~ 6 lbs

Maximum Vernier Adjustment Force: (With Tension Nut fully engaged)

Rotation: ~ 4.5 lbs (Rotation of knob produces ~4.5 lbs of thrust force)

Operation Temp: -65° to 450° F

Options: Wear sleeves available for custom controls.

Project Engineer: <i>[Signature]</i> Date: 7/16/13	Engineering Manager: <i>[Signature]</i> Date: 7/17/13	Quality Manager: <i>[Signature]</i> Date: 7-19-13	Manufacturing Manager: <i>[Signature]</i> Date: 7-17-13
--	---	---	---

McFarlane McFarlane Aviation, Inc.
696 East 1700 Road
Baldwin City, Kansas 66006

Title: McFarlane Vernier Assist Throttle Controls			
Size: A	Drawn: BWM	Sheet: 1 of 1	
Part Number: VARIOUS		Drawing Number: 6609	REVISION A