

**APS BlackSteel® Brake Discs and Linings**

Improved braking performance with superior rust pit resistance

APS is a leading manufacturer of FAA-PMA replacement brake components. Their proprietary **BlackSteel** brake discs and linings are designed to provide optimal braking performance and strength with longer service life.

**Installation Tip:**

One of the most important factors in disc and lining performance and safety margins is proper break-in. For break-in procedures go to: [www.mcfarlaneaviation.com/pdfDocuments/APSBreak-InProcedures.pdf](http://www.mcfarlaneaviation.com/pdfDocuments/APSBreak-InProcedures.pdf)



**A truly superior product.**  
**Don't buy yesterday's technology!**

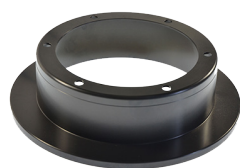
**APS BlackSteel® Brake Discs**

**State-of-the-art CNC machined from a one-piece forging**

The high quality APS **BlackSteel** brake discs are CNC machined from one piece forgings, eliminating weld failures. When the metal is forged, it creates a directional grain flow that follows the contour of the disc. This allows for a much stronger disc that has a reduced risk of the cracking, distortion and catastrophic failures associated with inferior welded designs.

**Proprietary heat treatment provides strength and corrosion resistance**

**BlackSteel** discs are put through a proprietary heat treating process that strengthens the steel by bonding the carbon, oxygen, and nitrogen in the top layer of the metal. The process is not a coating, but a transformation of the top layer of the metal, providing corrosion resistance. The heat treatment gives the steel its black appearance and provides the surface with a high resistance to the corrosion and oxidation associated with the extreme thermal cycling experienced in aircraft braking systems. This makes it an excellent choice for agricultural aircraft that work in a harsh, chemical environment, as well as for anyone who leaves their aircraft outside most of the time. The reduction of corrosion, pitting, rusting and longer service life result in enhanced safety, durability and value, while providing optimum braking performance and strength. APS discs can be used with APS lining or other PMA or OEM lining.



P/N APS164-02706



P/N APS164-00300



P/N APS164-03006

**APS Brake Linings**

**Superior stopping power**

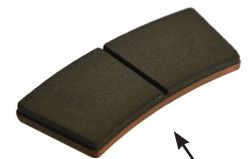
Two types of brake linings are available: semi-metallic/organic (abrasive) and metallic (adherent). The part number of the brake assembly as determined by the OEM dictates which type of lining is to be used. APS linings can be used with APS discs or other PMA or OEM discs.

**Semi-Metallic Brake Linings**

The semi-metallic linings are made with Kevlar fibers integrated into the material, providing the greatest stopping power and long lining life. The optimal operating temperature of the semi-metallic linings is 600-900 deg F.

**Metallic Brake Linings**

APS metallic brake linings are constructed from an innovative design and durable materials, providing longer wear and superior stopping power for greater safety. The main ingredient in the metallic linings is iron. In an adherent system, a thin layer of lining material transfers and adheres to the disc during break-in. The optimal operating temperature range of the metallic linings is 950-1200 deg F.



Top Lining  
P/N APS66-04400  
Bottom Lining



P/N APS66-10900



P/N APS66-10800



P/N APS66-10600



P/N APS66-02200

**APS Lining Retaining Rivets and Pins**

Lining retaining pins are used on various metallic brake linings and rivets are used on various organic brake linings. Retaining pins are sold individually and rivets are sold in packages of 25.

Rivets and Pins			
Part Number	Description	Head Diameter	Shank Diameter
APS105-00200	Rivet	5/16"	5/32"
APS105-06700	Rivet	5/16"	3/16"
APS177-00300	Pin	5/16"	5/32"
APS177-00400	Pin	5/16"	3/16"
APS177-01600	Pin	3/8"	3/16"



P/N APS105-00200



P/N APS177-00300

**See the following pages for eligibility**

## Brake and Wheel Parts

### Brake Discs and Linings



Brake and Wheel Parts

### APS BlackSteel® Brake Discs, Linings, and Rivets

**Brake Disc, Lining and Rivet eligibility for aircraft with original wheel and brake assemblies**

Note: The wheel and brake assemblies on many aircraft have been changed. Verify the wheel and brake assembly part numbers on your aircraft to ensure proper selection.

Aircraft Model	Serial Number	Wheel Assy P/N	Brake Assy P/N	Brake Disc P/N	Lining P/N	Linings/Wheel	Rivet or Pin P/N
<b>Aer Res</b>							
J-2	All	40-78B	30-9	APS164-01700	APS66-10600	2	APS105-00200
<b>Aerofab</b>							
LA-250 (6-Place) Renegade	All	40-74B	30-51B	APS164-00700	APS66-10600	4	APS105-00200
LA-4	246 and up <sup>2</sup>	40-113X	30-75X	APS164-04000	APS66-10500	2	APS105-00200
		40-74 or 40-74B	30-51 or 30-51B	APS164-00700	APS66-10600	4	APS105-00200
		40-74A	30-51	APS164-04700	APS66-10600	4	APS105-00200
<b>Aerospatiale/Socata</b>							
100,110,125,150,180 Series 110ST Calopin		40-97D	30-63J	APS164-02601	APS66-10500	2	APS105-00200
160ST Gamement, 180T Gairien, 180GT Gailaard	All	40-97D	30-63J	APS164-02601	APS66-10500	2	APS105-00200
220,236 Series, 235G Guerrier, 235GT Gabrier, 235CA Gaucho, TB20, 21 Trinidad	All	40-84	30-41B	APS164-01900	APS66-10600	4	APS105-00200
TB30 Epsilon	All	40-90B	30-23B	APS164-02201	APS66-06500	2	APS177-00300
TB9 Tampico, TB10 Tobago, TB200	All	40-97E	30-63J	APS164-02601	APS66-10500	2	APS105-00200
<b>Aero Commander</b>							
112,112A	All	40-113A	30-79	APS164-04300	APS66-10500	2	APS105-00200
112B,112TC, 112TCA,114, 114A,B	All	40-75H	30-52H	APS164-01501	APS66-10500	4	APS105-00200
<b>Air Tractor</b>							
AT-300,301,302	All	40-101	30-67X	APS164-03006	APS66-10800	4	APS105-00200
			30-89			6	APS105-00200
AT-400	All	40-133	30-98C	APS164-05806	APS66-10800	12	APS105-00200
AT-400A	All	40-101	30-67X	APS164-03006	APS66-10800	4	APS105-00200
			30-89			6	APS105-00200
AT-401,401A	All	40-234	30-184	APS164-05606	APS66-10800	8	APS105-00200
AT-402,501, 502,503,503A	All	40-133	30-98C	APS164-05806	APS66-10800	12	APS105-00200
AT-602	All	40-403	30-231	APS164-22202	APS66-06600	12	APS177-00300
AT-802	All <sup>2</sup>	40-279	30-210	APS164-23001	APS66-13100	16	APS105-06700
			30-210A	APS164-23002	APS66-13100	16	APS105-06700
<b>Aircraft Designs</b>							
Stallion		40-75B	30-52	APS164-01501	APS66-10500	4	APS105-00200
<b>American Champion</b>							
7ACA	All <sup>2</sup>	40-28D	30-19A	APS164-00500	APS66-10600	2	APS105-00200
		40-78B	30-9	APS164-01700	APS66-10600	2	APS105-00200
7ECA, 7GCAA, 7GCBC, 7KCAB	All	40-28D	30-19A	APS164-00500	APS66-10600	2	APS105-00200
8GCBC Scout	All	40-47	30-32B	APS164-01100	APS66-10600	4	APS105-00200
8KCAB	All	40-28D	30-19A	APS164-00500	APS66-10600	2	APS105-00200
T-250 Aries		40-75G	30-52S	APS164-01501	APS66-10500	4	APS105-00200
<b>Arctic Aircraft</b>							
S1B2 Arctic Tern	001 thru 1021	40-28	30-18	APS164-00500	APS66-10600	2	APS105-00200
	1022 and up	40-86B	30-55	APS164-02000	APS66-10500	2	APS105-00200
<b>ASTA GAF (Nomad)</b>							
N22B, N22S	All	40-75T	30-52Q	APS164-08300	APS66-10500	4	APS105-00200
N24A	All <sup>2</sup>	40-75T	30-52Q	APS164-08300	APS66-10500	4	APS105-00200
		40-143	30-129	APS164-08200	APS66-06200	4	APS177-00300
<b>Avions Pierre Robin</b>							
140, 160	All	40-97D	30-52T	APS164-03601	APS66-10500	4	APS105-00200
DR400 Series	All	40-97D	30-63E	APS164-02601	APS66-10500	2	APS105-00200
HR100	All <sup>2</sup>	40-97D	30-63D or 30-63E	APS164-02601	APS66-10500	2	APS105-00200
			30-52N	APS164-03601	APS66-10500	4	APS105-00200
HR120	All	40-97D	30-63D or 30-63E	APS164-02601	APS66-10500	2	APS105-00200
HR200	All <sup>2</sup>	40-97D	30-63D or 30-63E	APS164-02601	APS66-10500	2	APS105-00200

**Eligibility continued on next page**

### APS BlackSteel® Brake Discs, Linings, and Rivets continued from previous page

Brake and Wheel Parts

Aircraft Model	Serial Number	Wheel Assy P/N	Brake Assy P/N	Brake Disc P/N	Lining P/N	Linings/Wheel	Rivet or Pin P/N
<b>Avions Pierre Robin continued from previous page</b>							
HR200	All 2	40-97D	30-52N	APS164-03601	APS66-10500	4	APS105-00200
HR210	All	40-97D	30-52N	APS164-03601	APS66-10500	4	APS105-00200
HR400 Series	All	40-97D	30-52T	N/A	APS66-10500	4	APS105-00200
R1000, R2000, R3000 Series	All	40-97D	30-63E	N/A	APS66-10500	2	APS105-00200
R2160	All	40-97A	30-63E	APS164-02601	APS66-10500	2	APS105-00200
<b>Ayres</b>							
S2R-PZL600 Thrush	R35-001 and up	40-133	30-98D	APS164-05806	APS66-10800	12	APS105-00200
S2R-600 Thrush	1939 thru 2529R	40-129	30-94	APS164-05606	APS66-10800	8	APS105-00200
	2530R and up	40-133	30-98D	APS164-05806	APS66-10800	12	APS105-00200
S2R-711 Turbo Thrush	T11-001 and up	40-133	30-98D	APS164-05806	APS66-10800	12	APS105-00200
S2R-800 Thrush	5000R thru 5082R	40-129	30-94	APS164-05806	APS66-10800	8	APS105-00200
	5083R and up	40-133	30-98				
S2RHG-T65 Turbo Thrush	All	40-133	30-98D	APS164-05806	APS66-10800	12	APS105-00200
S2R-R1340, S2R-R1820, S2R-R3S	All	40-133	30-98D	APS164-05806	APS66-10800	12	APS105-00200
S2R-T15 Turbo Thrush	All	40-133	30-98	APS164-05806	APS66-10800	12	APS105-00200
S2R-T34 Turbo Thrush	6000 and up	40-133	30-98D	APS164-05806	APS66-10800	12	APS105-00200
S2R-T41 Turbo Thrush	T41-089 and 090	40-133	30-98D	APS164-05806	APS66-10800	12	APS105-00200
S2R-T65 Turbo Thrush	All	40-133	30-98D	APS164-05806	APS66-10800	12	APS105-00200
<b>Beechcraft</b>							
M19A, B19 1	MB-461 thru MB-865	40-113C	30-75B or 30-79A	APS164-04300	APS66-10500	2	APS105-00200
A23, A23A, A23-19, A23-24, B23, C23 1	All M-1095 thru M-1979						
A24R, B24R, C24R 1	MC-22 thru MC-536						
33, A33	All	40-1	30-1	APS164-00900	APS66-11100	2	APS105-00200
B33 1	CD-388 thru CD-639	40-37	30-24	APS164-00700	APS66-10600	4	APS105-00200
F33A 1	CE-301 thru CE-634	40-83	30-54	APS164-02505	APS66-10500	4	APS105-00200
	CE635 thru CE-1071	40-83A	30-54C	APS164-02505	APS66-10500	4	APS105-00200
F33C 1	CJ-125 thru CJ-155	40-83A	30-54C	APS164-02505	APS66-10500	4	APS105-00200
G33 1	CD-1272 thru CD-1304	40-83	30-54	APS164-02504	APS66-10500	4	APS105-00200
V35B 1	D-9862 thru D-10403	40-83	30-54A	APS164-02504	APS66-10500	4	APS105-00200
36, A36 1	E-1 thru E-824	40-83	30-54	APS164-02505	APS66-10500	4	APS105-00200
A36 1	E-825 thru E-3635	40-83A	30-54, 54A, or 54C	APS164-02505	APS66-10500	4	APS105-00200
A36TC, B36TC	EA-1 thru EA-695	40-83A or 40-83B	30-54A or 30-54C	APS164-02505	APS66-10500	4	APS105-00200
B55	All	40-128D	30-93B	APS164-06106	APS66-09700	6	APS177-00300
	TC-2092 thru TC-2180	40-128	30-93B	APS164-06106	APS66-04400	6	APS177-00300
	TC-2181 thru TC-2456	40-98G	30-66G	APS164-02706	APS66-09700	4	APS177-00300
C55, D55	All	40-98	30-66	APS164-02706	APS66-04400	4	APS177-00300
E55	All	40-128D	30-93C	APS164-06106	APS66-09700	6	APS177-00300
	TE-768 thru TE-1142	40-98	30-66	APS164-02706	APS66-04400	4	APS177-00300
	TE-1143 thru TE-1201 2	40-98	30-66	APS164-02706	APS66-04400	4	APS177-00300
56TC, A56TC	All	40-98G	30-66G	APS164-09700	APS66-09700	4	APS177-00300
	All	40-98	30-69A	APS164-02706	APS66-02200	4	APS177-00300
	All	40-128D	30-93C	APS164-06106	APS66-09700	6	APS177-00300
58	TH-1 thru TH-972	40-98	30-66	APS164-02706	APS66-04400	4	APS177-00300
	TH-973 thru TH-2124	40-98	30-66	APS164-02706	APS66-04400	4	APS177-00300
		40-98G	30-66G	APS164-02706	APS66-09700	4	APS177-00300
58P 1	TJ-436 thru TJ-497	40-171	30-145	APS164-20806	APS66-09700	6	APS177-00300
B60	All	40-171	30-145	APS164-20806	APS66-09700	6	APS177-00300
76	All	40-83	30-54B	APS164-02504	APS66-10500	4	APS105-00200
<b>Bellanca</b>							
17-30A, 17-31A, 17-31ATC	All	40-75E	30-52M	APS164-01501	APS66-10500	4	APS105-00200
DW-1	All	40-101	30-89A	APS164-03006	APS66-10800	6	APS105-00200
<b>Burkhart Grob</b>							
G103, G103C Twin II Sailplane	All	40-97A	30-63A	APS164-02601	APS66-10500	2	APS105-00200
G109 Series Power Glider	All	40-78B	30-9	APS164-01700	APS66-10600	2	APS105-00200
<b>Cessna</b>							
120, 140, 140A	All	40-97A	30-63A	APS164-02601	APS66-10500	2	APS105-00200
150A 1, B	15059119 thru 15059700	40-12	30-9	APS164-00400	APS66-10600	2	APS105-00200
150C	All	40-57	30-40	APS164-00400	APS66-10600	2	APS105-00200

**Eligibility continued on next page**

## Brake and Wheel Parts Brake Discs and Linings



### APS BlackSteel® Brake Discs, Linings, and Rivets continued from previous page

Aircraft Model	Serial Number	Wheel Assy P/N	Brake Assy P/N	Brake Disc P/N	Lining P/N	Linings/ Wheel	Rivet or Pin P/N
<b>Cessna continued from previous page</b>							
150D,E	All	40-79A	30-40	APS164-01600	APS66-10600	2	APS105-00200
150F,G	All	40-97	30-63	APS164-02601	APS66-10500	2	APS105-00200
150H,J,K	All	40-97A	30-63A	APS164-02601	APS66-10500	2	APS105-00200
150L <sup>1</sup> ,M <sup>1</sup>	15072004 thru 15074850 <sup>2</sup>	D-30063	C-30018	N/A	APS66-10900	2	APS105-00200
	15074851 thru 15077403	40-113	30-75	APS164-04000	APS66-10500	2	APS105-00200
	15077380, 15077402, 15077404 thru 15079113 <sup>2</sup>	40-113	30-75	APS164-04000	APS66-10500	2	APS105-00200
		D30291-6	C30018 or C30018-4	APS164-30440	APS66-10900	2	APS105-00200
A150K	All	40-97A	30-63A	APS164-02601	APS66-10500		APS105-00200
A150L <sup>1</sup> , M <sup>1</sup>	A1500227 thru A1500429 <sup>2</sup>	D-30063	C-30018	N/A	APS66-10900	2	APS105-00200
		40-113	30-75	APS164-04000	APS66-10500	2	APS105-00200
	A1500430 thru A15000641	40-113	30-75	APS164-04000	APS66-10500	2	APS105-00200
A150M <sup>1</sup>	A15000642 thru A1500717 <sup>2</sup>	40-113	30-75	APS164-04000	APS66-10500	2	APS105-00200
		D30291-6	C30018 or C30018-4	APS164-30440	APS66-10900	2	APS105-00200
F150F,G	All	40-97	30-63	APS164-02601	APS66-10500	2	APS105-00200
F150H,J	All	40-97A	30-63A	APS164-02601	APS66-10500	2	APS105-00200
F150K,L,M <sup>1</sup>	F1500530 thru F15001332	40-113	30-75	APS164-04000	APS66-10500	2	APS105-00200
F150M <sup>1</sup>	F15001333 thru F15001418 <sup>2</sup>	40-113	30-75	APS164-04000	APS66-10500	2	APS105-00200
		D30291-6	C30018-4	APS164-30440	APS66-10900	2	APS105-00200
FA150K,L	All	40-113	30-75	APS164-04000	APS66-10500	2	APS105-00200
FRA150L	All	40-113	30-75	APS164-04000	APS66-10500	2	APS105-00200
152	All <sup>2</sup>	40-113	30-75	APS164-04000	APS66-10500	2	APS105-00200
		D30063	C-30018	N/A	APS66-10900	2	APS105-00200
A152, F152	All	40-113	30-75	APS164-04000	APS66-10500	2	APS105-00200
FA152	All <sup>2</sup>	40-113	30-75	APS164-04000	APS66-10500	2	APS105-00200
		D-30660-1	C-30018-5	APS164-30615-4	APS66-10900	2	APS105-00200
		D-30600-1	C-30018-5	N/A	APS66-10900	2	APS105-00200
		D-30580	C-30018-4	APS164-30195	APS66-10900	2	APS105-00200
		D-30291-6	C-30018-4	APS164-30440	APS66-10900	2	APS105-00200
172 <sup>1</sup> , 172A,B,C	17246421 thru 17249544	40-113	30-75	APS164-04000	APS66-10900	2	APS105-00200
172D,E,F,G,H,I,K	All	40-97A	30-56, 30-63, 30-63A	APS164-02601	APS66-10500	2	APS105-00200
172L,M <sup>1</sup>	17259224 thru 17263458 <sup>2</sup>	40-97A	30-56, 30-63,	APS164-02601	APS66-10500	2	APS105-00200
		D-30063	C-30018-2	N/A	APS66-10900	2	APS105-00200
		40-113	30-63A, 30-75A	APS164-04000	APS66-10500	2	APS105-00200
172M <sup>1</sup> ,N,P,Q,R,S	17263459 and on	40-113	30-75A	APS164-04000	APS66-10500	2	APS105-00200
172RG	All	D-30660-1	C-30018-6, C-30764-5	APS164-30615-4	APS66-10900	2	APS105-00200
F172F,G,H	All	40-97A	30-56, 30-63A	APS164-02601	APS66-10500	2	APS105-00200
F172K	All	40-113	30-75A	APS164-04000	APS66-10500	2	APS105-00200
F172L	F17200805 thru F17200904	40-113	30-75A	APS164-04000	APS66-10500	2	APS105-00200
F172M	F17200905 thru F17201514 <sup>2</sup>	40-113	30-75A	APS164-04000	APS66-10500	2	APS105-00200
		D-30260, D30580	C-30018-2	APS164-30195	APS66-10900	2	APS105-00200
F172N <sup>1</sup>	F17201515 thru F17201639	D-30600-1	C-30018-6	N/A	APS66-10900	2	APS105-00200
		40-113	30-75A	APS164-04000	APS66-10500	2	APS105-00200
F172N <sup>1</sup> ,P	F17201640 thru F17202254	D-30660-1	C-30018-6, C30764-6	APS164-30615-4	APS66-10900	2	APS105-00200
		40-113	30-75A	APS164-04000	APS66-10500	2	APS105-00200
F172RG	All	40-113	30-75	APS164-04000	APS66-10500	2	APS105-00200
FR172J <sup>1</sup>	FR17200351 thru FR17200590	D-30260	C-30018-2	APS164-30195	APS66-10900	2	APS105-00200
FR172K <sup>1</sup>	FR17200591 thru FR17200620	D-30600-1	C-30018-6	N/A	APS66-10900	2	APS105-00200
	FR17200621 thru FR17200675	D-30660-1	C-30018-6, C30764-6	APS164-30615-4	APS66-10900	2	APS105-00200
R172H <sup>1</sup>	R1720453 thru R1720603	D-30063	C-30018-2	N/A	APS66-10900	2	APS105-00200

**Eligibility continued on next page**

### APS BlackSteel® Brake Discs, Linings, and Rivets continued from previous page

Brake and Wheel Parts

Aircraft Model	Serial Number	Wheel Assy P/N	Brake Assy P/N	Brake Disc P/N	Lining P/N	Linings/Wheel	Rivet or Pin P/N
<b>Cessna continued from previous page</b>							
175I, A, B	1755876 thru 17557119	40-97A	30-63A	APS164-02601	APS66-10500	2	APS105-00200
177A, B1	17701165 thru 17701530	40-97A	30-63A	APS164-02601	APS66-10500	2	APS105-00200
177B1	17701531 thru 17702123	40-113	30-45	APS164-04000	APS66-10500	2	APS105-00200
177B1	17702124 thru 177023132	40-113	30-45	APS164-04000	APS66-10500	2	APS105-00200
	17702314 thru 177025222	D-30580	C-30018-4	APS164-30195	APS66-10900	2	APS105-00200
	17702523 thru 177026722	40-113	30-45	APS164-04000	APS66-10500	2	APS105-00200
	17702673 thru 177027522	D-30291-6	C-30018-4	APS164-30440	APS66-10900	2	APS105-00200
		40-113	30-45	APS164-04000	APS66-10500	2	APS105-00200
		D-30660-1	C-30018-5	N/A	APS66-10900	2	APS105-00200
177RG	177RG0001 thru 177RG0592	40-113	30-45	APS164-04000	APS66-10500	2	APS105-00200
	177RG0593 thru 177RG07872	40-113	30-75	APS164-04000	APS66-10500	2	APS105-00200
	177RG0788 thru 177RG10512	D-30580	C-30018-4	APS164-30195	APS66-10900	2	APS105-00200
	177RG1052 thru 177RG12662	40-113	30-75	APS164-04000	APS66-10500	2	APS105-00200
	177RG1267 thru 177RG13662	D-30291-6	C-30018-4	APS164-30440	APS66-10900	2	APS105-00200
		40-113	30-75	APS164-04000	APS66-10500	2	APS105-00200
F177RG	177RG1267 thru 177RG13662	D-30660-1	C-30018-5	N/A	APS66-10900	2	APS105-00200
	177RG0001 thru F177RG01222	40-113	30-75	APS164-04000	APS66-10500	2	APS105-00200
	F177RG0123 thru F177RG01382	40-113	30-75	APS164-04000	APS66-10500	2	APS105-00200
	F177RG0139 thru F177RG01602	D-30580	C-30018-4	APS164-30195	APS66-10900	2	APS105-00200
	F177RG0161 thru F177RG01772	40-113	30-75	APS164-04000	APS66-10500	2	APS105-00200
		D-30291-6	C-30018-4	APS164-30440	APS66-10900	2	APS105-00200
180G	All	40-75B	30-52	APS164-01501	APS66-10500	4	APS105-00200
180H1	18051775 thru 18051993	40-66	30-21	APS164-00700	APS66-10600	4	APS105-00200
	18052011 thru 18052284	40-75D	30-52D, 30-52N	APS164-03601	APS66-10500	4	APS105-00200
180J1	18052285 thru 180525002	D-30063-1	C-30018-1	N/A	APS66-10900	2	APS105-00200
		D30291-3	C30118-4	APS164-30414	APS66-10900	2	APS105-00200
		40-75B	30-52D	APS164-01501	APS66-10500	2	APS105-00200
		40-75D	30-52N	APS164-03601	APS66-10500	2	APS105-00200
180J1, K1	18052501 thru 180529242	40-75B	30-52D	APS164-01501	APS66-10500	2	APS105-00200
		40-75D	30-52N	APS164-03601	APS66-10500	2	APS105-00200
		D30291-3	C30118-4	APS164-30414	APS66-10900	2	APS105-00200
		40-75B	30-52D	APS164-01501	APS66-10500	2	APS105-00200
180K1	18052925 thru 180532032	40-75D	30-52N	APS164-03601	APS66-10500	2	APS105-00200
		D30660-2	C30118-5	APS164-30615-2	APS66-10900	2	APS105-00200
		40-97A	30-63A, 30-56A	APS164-02601	APS66-10500	2	APS105-00200
182B1, C, D, E, F, G, H, J, K, L, M, N1	18251886 thru 18260445	40-97A	30-63A, 30-56A	APS164-02601	APS66-10500	2	APS105-00200
182N1	18260446 thru 18260825	40-113	30-75	APS164-04000	APS66-10500	2	APS105-00200
182P1	18260826 thru 18264295	40-113	30-75	APS164-04000	APS66-10500	2	APS105-00200
	18264296 thru 182651752	40-113	30-75	APS164-04000	APS66-10500	2	APS105-00200
	18265176 thru 182653282	D-30291-6	C-30018-4	APS164-30440	APS66-10900	2	APS105-00200
182Q1	18265329 thru 182659652	40-113	30-75	APS164-04000	APS66-10500	2	APS105-00200
		D-30600-1	C-30018-5	N/A	APS66-10900	2	APS105-00200
		40-113	30-75	APS164-04000	APS66-10500	2	APS105-00200
		D-30600-1	C-30018-5	N/A	APS66-10900	2	APS105-00200
		D30660-1	C-30018-5	APS164-30615-4	APS66-10900	2	APS105-00200
182R1	18265966 thru 182677152	40-113	30-75	APS164-04000	APS66-10500	2	APS105-00200
	18267716 thru 18268541	D-30600-1	C-30018-5	APS164-30615-4	APS66-10900	2	APS105-00200
182R1	18267716 thru 18268541	D30660-3	D30118-4	APS164-30615-3	APS66-10900	2	APS105-00200
182S, T, T182T	All	40-75B	30-52E	APS164-01501	APS66-10500	4	APS105-00200
F182P	All	D-30291-6	C-30018-4	APS164-30440	APS66-10900	2	APS105-00200

Eligibility continued on next page

## Brake and Wheel Parts

### Brake Discs and Linings



### APS BlackSteel® Brake Discs, Linings, and Rivets continued from previous page

Aircraft Model	Serial Number	Wheel Assy P/N	Brake Assy P/N	Brake Disc P/N	Lining P/N	Linings/ Wheel	Rivet or Pin P/N
<b>Cessna continued from previous page</b>							
F182Q <sup>1</sup>	F18200026 thru F18200064	D-30600-1	C-30018-5	N/A	APS66-10900	2	APS105-00200
F182Q <sup>1</sup>	F18200065 thru F18200169	D-30660-1	C-30018-5	APS164-30615-4	APS66-10900	2	APS105-00200
FR182, R182, TR182, T182	All	D-30660-3	D-30118-3	APS164-30615-3	APS66-10900	4	APS105-00200
185, 185A	All	40-32	30-21	APS164-00700	APS66-10600	4	APS105-00200
185B	All	40-66	30-21	APS164-00700	APS66-10600	4	APS105-00200
185C,D,E	185-0654 thru 185-1149	40-75B	30-52	APS164-01501	APS66-10500	4	APS105-00200
A185E <sup>1</sup>	185-1150 thru 18502090 <sup>2</sup>	40-66	30-21	APS164-00700	APS66-10600	4	APS105-00200
		40-75B	30-52	APS164-01501	APS66-10500	4	APS105-00200
		40-75D	30-52D	APS164-03601	APS66-10500	4	APS105-00200
A185F	All <sup>2</sup>	40-75B	30-52	APS164-01501	APS66-10500	4	APS105-00200
		40-75D	30-52D	APS164-03601	APS66-10500	4	APS105-00200
		D-30291-3	D-30118-5	APS164-30414	APS66-10900	4	APS105-00200
		D-30291-1	D-30118-5	APS164-30388	APS66-10900	4	APS105-00200
		D-30660-2	D-30118-5	APS164-30615-2	APS66-10900	4	APS105-00200
188, 188A, 188B, A188, A188A	188-0001 thru 18801040 <sup>2</sup>	40-75B	30-52B	APS164-01501	APS66-10500	4	APS105-00200
		40-101A	30-67	APS164-03106	APS66-10800	4	APS105-00200
A188B <sup>1</sup> , T188C	18801041 thru 18803521 <sup>2</sup> , 18801041T thru T18803521T <sup>2</sup>	40-101	30-67A	APS164-03006	APS66-10800	4	APS105-00200
		40-101A	30-67A	APS164-03106	APS66-10800	4	APS105-00200
		40-98A	30-66A	APS164-02707	APS66-11000	4	APS105-00200
210-5 (205)	All	40-67	30-35	APS164-00700	APS66-10600	4	APS105-00200
210-5A (205A)	All	40-75B	30-52	APS164-01501	APS66-10500	4	APS105-00200
206,U206,A,B,C,D <sup>1</sup>	206-0001 thru U206-1256	40-75B	30-52	APS164-01501	APS66-10500	4	APS105-00200
U206D <sup>1</sup> ,E	U2061257 thru U20601700 <sup>2</sup>	40-75B	30-52	APS164-01501	APS66-10500	4	APS105-00200
		40-75D	30-52N	APS164-03601	APS66-10500	4	APS105-00200
U206F <sup>1</sup>	U20601701 thru U20602199 <sup>2</sup>	40-75B	30-52	APS164-01501	APS66-10500	4	APS105-00200
		40-75D	30-52N	APS164-03601	APS66-10500	4	APS105-00200
		D-30291-1	D-30118-6	APS164-30388	APS66-10900	4	APS105-00200
		40-75D	30-52N	APS164-03601	APS66-10500	4	APS105-00200
U206F,G	U20602200 thru U20604649 <sup>2</sup>	D-30291-1	D-30118-6	APS164-30388	APS66-10900	4	APS105-00200
		D-30660-2	D-30118-6	APS164-30615-2	APS66-10900	4	APS105-00200
		40-75D	30-52N	APS164-03601	APS66-10500	4	APS105-00200
	U20604650 thru U20607020 <sup>2</sup>	D-30660-2	D-30118-6	APS164-30615-2	APS66-10900	4	APS105-00200
		D-30660-3	D-30118-4	APS164-30615-3	APS66-10900	4	APS105-00200
206H,T206H	All	40-75B	30-52U	APS164-01501	APS66-10500	4	APS105-00200
P206, P206A,B,C,D <sup>1</sup>	P206-0001 thru P206-0566	40-75B	30-52	APS164-01501	APS66-10500	4	APS105-00200
P206D,E <sup>1</sup>	P206-0557 thru P20600647	40-75D	30-52N	APS164-03601	APS66-10500	4	APS105-00200
207, 207A, T207, T207A	All <sup>2</sup>	40-75B	30-52F	APS164-01501	APS66-10500	4	APS105-00200
		40-75D	30-52A	APS164-03601	APS66-10500	4	APS105-00200
208, 208A,B	All	40-179	30-163 or 30-182	APS164-22201 <sup>8</sup>	APS66-03300 <sup>3</sup> APS66-15300 <sup>6,7</sup>	8	APS177-00300 <sup>7</sup>
210C	21058086 thru 21058220	40-21	30-45	APS164-00900	APS66-11100	2	APS105-00200
210D,E,F,G,H,J,K,L <sup>1</sup>	21058221 thru 21060089 <sup>2</sup>	40-75B	30-52 or 30-52V	APS164-01501	APS66-10500	4	APS105-00200
		D-30291-2	D-30118-4	APS164-30398	APS66-10900	4	APS105-00200
210L <sup>1</sup> ,M,N,R	21060090 thru 21065009 <sup>2</sup>	40-75B	30-52 or 30-52V	APS164-01501	APS66-10500	4	APS105-00200
		D-30291-2	D-30118-4	APS164-30398	APS66-10900	4	APS105-00200
		D-30660-3	D-30118-4	APS164-30615-3	APS66-10900	4	APS105-00200
P210N,R	All <sup>2</sup>	40-75B	30-52V	APS164-01501	APS66-10500	4	APS105-00200
		40-142	30-127C	APS164-07800	APS66-06200	4	APS177-00300
T210F,G,H,J	All	40-75 or 40-75B	30-52	APS164-01501	APS66-10500	4	APS105-00200
303, T303	All <sup>2</sup>	40-142	30-127C	APS164-07800	APS66-06200	4	APS177-00300
		40-98H	30-66F	APS164-08406	APS66-04400	4	APS177-00300
305	All <sup>2</sup>	40-75F	30-52L	APS164-01501	APS66-10500	4	APS105-00200
		40-97E	30-63K	APS164-02601	APS66-10500	2	APS105-00200
310R <sup>1</sup>	310R0501 thru 310R2140 <sup>2</sup>	40-40A	30-28B	APS164-00806	APS66-03300	6	APS177-00400
		40-40D	30-28B	APS164-20206	APS66-03300	6	APS177-00400

Brake and Wheel Parts

**Eligibility continued on next page**

### APS BlackSteel® Brake Discs, Linings, and Rivets continued from previous page

Brake and Wheel Parts

Aircraft Model	Serial Number	Wheel Assy P/N	Brake Assy P/N	Brake Disc P/N	Lining P/N	Linings/ Wheel	Rivet or Pin P/N
<b>Cessna continued from previous page</b>							
335	All	40-40A	30-28B	APS164-00806	APS66-03300	6	APS177-00400
336	3360001 thru 3360098	40-67	30-35	APS164-00700	APS66-10600	4	APS105-00200
	3360099 and up	40-75B	30-52	APS164-01501	APS66-10600	4	APS105-00200
337, 337A	All	40-96A	30-61	APS164-02504	APS66-10500	4	APS105-00200
337B <sup>1</sup> ,C,D	3370526 thru 337-0619	40-96A	31-61A	APS164-02504	66-03600 <sup>3</sup>	4	APS105-00200
	3370526 thru 3371193	40-96A	31-61D	APS164-02504	APS66-10500	4	APS105-00200
337E	All	40-98A	30-69B	APS164-02707	APS66-02200	4	APS177-00300
340, 340A <sup>1</sup>	340-0001 thru 340A1200	40-40A	30-28B	APS164-00806	APS66-03300	6	APS177-00400
340A <sup>1</sup>	340A1201 thru 340A1817	40-40D	30-28B	APS164-20206	APS66-03300	6	APS177-00400
401 Series	All	40-40A	30-28B	APS164-00806	APS66-03300	6	APS177-00400
402,A,B <sup>1</sup>	4020001 thru 402C0400	40-135	30-100	APS164-06406	APS66-06600	8	APS177-01600
402B,C <sup>1</sup>	402C0401 thru 402C1020 <sup>2</sup>	40-135	30-100	APS164-06406	APS66-06600	8	APS177-01600
		40-135A	30-100	APS164-20306	APS66-06600	8	APS177-01600
404	All	40-132	30-97	APS164-09100	APS66-06400	8	APS177-01600
411, 411A <sup>1</sup>	All <sup>2</sup>	40-40A	30-28B	APS164-00806	APS66-03300	6	APS177-00400
414	All	McCauley	N/A	N/A	APS66-06600		APS177-01600
414A <sup>1</sup>	414A0001 thru 414A0600 <sup>2</sup>	40-135	30-100	APS164-06406	APS66-06600	8	APS177-01600
		40-40A	30-28B	APS164-00806	APS66-03300	6	APS177-00400
		40-135	30-100	APS164-06406	APS66-06600	8	APS177-01600
		40-40A	30-28B	APS164-00806	APS66-03300	6	APS177-00400
421C <sup>1</sup>	421C0001 thru 421C0910 421C1001 thru 421C1807	40-135	30-100	APS164-06406	APS66-06600	8	APS177-01600
		40-135A	30-100	APS164-20306	APS66-06600	8	APS177-01600
425	All	40-138 or 40-138A	30-113 or 30-113A	APS164-05500	APS66-06400	8	APS177-01600
<b>Cirrus Design Group</b>							
SR-20	1601 and up	40-75P	30-52AB	APS164-01501	APS66-10500	4	APS105-00200
SR-22	1740 and up	40-406	30-233B	APS164-02504	APS66-06200	4	APS177-00300
<b>Daimler Benz/ M.B.B.</b>							
B.O. 209 Monsun	All	40-78B	30-9	APS164-01700	APS66-10600	2	APS105-00200
<b>Diamond Aircraft</b>							
DA20	All	40-78E	30-9D	APS164-24200	APS66-10600	2	APS105-00200
DA40	All	40-14A	30-239	APS164-24400	APS66-14100	2	APS105-00200
DA42 Twin Star	All	40-75Z	30-52Z	APS164-01501	APS66-10500	4	APS105-00200
<b>Eagle Aircraft</b>							
220, 300 Eagle	All	40-101	30-89A	APS164-03006	APS66-10800	6	APS105-00200
<b>Explorer Aeronautique</b>							
Private Explorer Float	All	40-101	30-67B	APS164-03006	APS66-10800	4	APS105-00200
<b>FFA Flugzeugwerke</b>							
AS202-18A4 Bravo	All	40-97A	30-63A	APS164-02601	APS66-10500	2	APS105-00200
<b>Found Brothers</b>							
100 Centennial	All	40-75B	30-52	APS164-01501	APS66-10500	4	APS105-00200
<b>GAF Australia</b>							
N22B, N22S	All	40-75T	30-52Q	APS164-08300	APS66-10500	4	APS105-00200
N24A	All <sup>2</sup>	40-75T	30-52Q	APS164-08300	APS66-10500	4	APS105-00200
		40-143	30-129	164-08200 <sup>4</sup>	APS66-06200	4	APS177-00300
<b>General Aviation (Italy)</b>							
F.20 Pegaso, F.20TP condor	All	40-75G	30-52P	APS164-01501	APS66-10500	4	APS105-00200
F.22 Pinguino	All	40-151	30-164	APS164-08500	APS66-06200	2	APS177-00300
<b>Great Lakes</b>							
2T-1A	All	40-113	30-75	APS164-04000	APS66-10500	2	APS105-00200
<b>Grob</b>							
G103, G103C	All	40-97A	30-63A	APS164-02601	APS66-10500	2	APS105-00200
G109, G109B	All	40-78B	30-9	APS164-01700	APS66-10600	2	APS105-00200
<b>Grumman</b>							
AA-1, AA-5	All	40-86A	30-55B	APS164-02000	APS66-10500	2	APS105-00200
AA-1A, AA-1B, AA-5A, AA-5B	All	40-88C	30-56B	APS164-02000	APS66-10500	2	APS105-00200
700	All	40-128C	30-93A	APS164-05006	APS66-02200	6	APS177-00300
450, 600	All	40-101	30-67	APS164-03006	APS66-10800	4	APS105-00200

**Eligibility continued on next page**

## Brake and Wheel Parts

### Brake Discs and Linings



### APS BlackSteel® Brake Discs, Linings, and Rivets continued from previous page

Aircraft Model	Serial Number	Wheel Assy P/N	Brake Assy P/N	Brake Disc P/N	Lining P/N	Linings/ Wheel	Rivet or Pin P/N
<b>Grumman continued from previous page</b>							
G164	All	40-47	30-32C	APS164-01100	APS66-10600	4	APS105-00200
G164A	All	40-101	30-67	APS164-03006	APS66-10800	4	APS105-00200
G164B, G164C, G164D	All	40-133	30-84	APS164-05806	APS66-10800	8	APS105-00200
GA-7	All	40-90	30-23B	APS164-02201	APS66-06500	2	APS177-00300
<b>Helio</b>							
H-250, H-295, H-391, H-395	All <sup>2</sup>	40-75D	30-52N	APS164-03601	APS66-10500	4	APS105-00200
		40-75E	30-52A	APS164-01501	APS66-10500	4	APS105-00200
		40-75T	30-52N	APS164-08300	APS66-10500	4	APS105-00200
		40-98A	30-66A	APS164-02707	APS66-10500	4	APS105-00200
<b>Hunting Firecracker A/C</b>							
NDN1T Turbo Firecracker	All	40-120C	30-83A	N/A	APS66-06200	4	APS177-00300
<b>Industria Unidas SA</b>							
A-9B Sparrow, Quail	All	40-99	30-41	APS164-02800	APS66-10600	4	APS105-00200
<b>Marsh Aviation</b>							
G-164C-T Turbo Cat	All	40-133	30-84	APS164-05806	APS66-10800	8	APS105-00200
S2R-T Turbo Thrush	All <sup>2</sup>	40-129 or 40-133	30-94	APS164-05606	APS66-10800	8	APS105-00200
<b>Maule Air</b>							
M4, M5, M6 Series	All	40-97D	30-63E	APS164-02601	APS66-10500	2	APS105-00200
M7, M9 Series	All	40-75D	30-52A or 30-52N	APS164-03601	APS66-10500	4	APS105-00200
<b>Mcculloch</b>							
J-2 Helicopter	All	40-78B	30-9	APS164-01700	APS66-10600	2	APS105-00200
<b>Mooney</b>							
M10 Cadet	All <sup>2</sup>	40-97 or 40- 97A	30-63 or 30-63A	APS164-02601	APS66-10500	2	APS105-00200
M20A,B <sup>1</sup>	1401 thru 3466	40-24	30-5	APS164-00900	APS66-11100	N/A	APS105-00200
M20C <sup>1</sup>	670001 thru 690098	40-86	30-56A	APS164-02000	APS66-10500	2	APS105-00200
M20D	All	40-24	30-5	APS164-00900	APS66-11100	N/A	APS105-00200
M20E <sup>1</sup>	101 thru 1308	40-24	30-5	APS164-00900	APS66-11100	N/A	APS105-00200
	670001 thru 700061	40-86	30-56A	APS164-02000	APS66-10500	2	APS105-00200
M20F <sup>1</sup>	660003 thru 700072	40-86	30-56A	APS164-02000	APS66-10500	2	APS105-00200
M20G,J,K	All	40-86	30-56A	APS164-02000	APS66-10500	2	APS105-00200
M20M	All	40-92A	30-65	APS164-02300	APS66-10500	4	APS105-00200
<b>NDN Aircraft</b>							
NDN6 Fieldmaster	All	40-175	30-149	164-21100 <sup>4</sup>	APS66-06600	12	APS177-01600
<b>Pacific Aerospace</b>							
FU24-954; FU24A-954	240, 247 and up	40-47	30-32C	APS164-01100	APS66-10600	4	APS105-00200
08-600 Cresco	All	40-101	30-89	APS164-03006	APS66-10800	6	APS105-00200
<b>Partenavia</b>							
P.64B, P.66B	All	40-28	30-18	APS164-00500	APS66-10600	2	APS105-00200
P.66C-160, P.66T	All	40-86B	30-55	APS164-02000	APS66-10500	2	APS105-00200
P.68, P.68B, P.68C, P.68C-TC	All	40-142	30-127	APS164-07800	APS66-06200	4	APS177-00300
<b>Partenavia</b>							
Series 300	All	40-163	30-139	APS164-20500	APS66-06200	8	APS177-00300
<b>Performance Aircraft</b>							
Legend	All	40-96E	30-61E	APS164-02504	APS66-10500	4	APS105-00200
<b>Pilatus Britten-Norman</b>							
BN-2 Series	All <sup>2</sup>	40-90F	30-23D	APS164-01506	APS66-06500	2	APS177-00300
		40-90	30-23A	APS164-02201	APS66-06500	2	APS177-00300
		40-90B	30-23C	APS164-02201	APS66-06500	2	APS177-00300
		40-98F	30-66D	APS164-02706	APS66-02200	4	APS177-00300
<b>Pilatus Britten-Norman</b>							
Defender 4000	All	40-128E	30-93E	164-23300 <sup>4</sup>	APS66-04400	6	APS177-00300
<b>Piper</b>							
J-3, PA-11, PA-12, PA-14, PA-16	All	40-60	30-60	APS164-06700	APS66-10600	4	APS105-00200
PA-18	All <sup>2</sup>	40-60	30-60	APS164-06700	APS66-10600	4	APS105-00200
		40-84	30-41	APS164-01900	APS66-10600	4	APS105-00200
PA-18-150, PA-18A-150	All	40-60	30-60	APS164-06700	APS66-10600	4	APS105-00200
PA-20	All <sup>2</sup>	40-60	30-60	APS164-06700	APS66-10600	4	APS105-00200
		40-84	30-41	APS164-01900	APS66-10600	4	APS105-00200
PA-22	All	40-84	30-41	APS164-01900	APS66-10600	4	APS105-00200
PA-22-108	All	40-28	30-18	APS164-00500	APS66-10600	2	APS105-00200
PA-23-150, 160	All	40-3	30-13	159-00200 <sup>4</sup>	APS66-10600	4	APS105-00200
PA-23-235	All	40-4	30-8	APS164-00206	APS66-10600	8	APS105-00200

**Eligibility continued on next page**



### APS BlackSteel® Brake Discs, Linings, and Rivets continued from previous page

Brake and Wheel Parts

Aircraft Model	Serial Number	Wheel Assy P/N	Brake Assy P/N	Brake Disc P/N	Lining P/N	Linings/Wheel	Rivet or Pin P/N
<b>Piper continued from previous page</b>							
PA-E23-250 <sup>1</sup>	27-3738 thru 27-7554 and 27-7554139	40-116	30-72	APS164-03206	APS66-06500	4	APS177-00300
	27-7554141 thru 27-7554149, and 27-7554138	40-116 or 40-131	30-96	APS164-05700	APS66-06200	8	APS177-00300
PA-24-180,250,260 <sup>1</sup>	24-1 thru 24-3306	40-5	30-12	159-00100 <sup>4</sup>	APS66-10600	4	APS105-00200
	24-3307 and on <sup>2</sup>	40-58 40-84	30-41 30-41B	APS164-00900 APS164-01900	APS66-10600 APS66-10600	4 4	APS105-00200 APS105-00200
PA-25, PA-25-235	25-1 thru 25-1999	40-5	30-12	159-00100 <sup>4</sup>	APS66-10600	4	APS105-00200
	25-2000 thru 25-4171	40-61	30-41	APS164-01300	APS66-10600	4	APS105-00200
	25-4172 and on	40-84A	30-41B	APS164-03300	APS66-10600	4	APS105-00200
PA-28-140	28-20002 thru 28-20520	40-28	30-18	APS164-00500	APS66-10600	2	APS105-00200
	28-20521 thru 28-7725290	40-86	30-55	APS164-02000	APS66-10500	2	APS105-00200
PA-28-150	28-1 thru 28-1760	40-28	30-18	APS164-00500	APS66-10600	2	APS105-00200
PA-28-151	All	40-86B	30-55	APS164-02000	APS66-10500	2	APS105-00200
PA-28-160	28-1761 thru 28-4377	40-86	30-55	APS164-02000	APS66-10500	2	APS105-00200
PA-28-161	All	40-86B	30-55	APS164-02000	APS66-10500	2	APS105-00200
PA-28-180 <sup>1</sup>	28-1 thru 28-1760	40-28	30-18	APS164-00500	APS66-10600	2	APS105-00200
	28-1761 thru 28-5869	40-86	30-55	APS164-02000	APS66-10500	2	APS105-00200
	28-7105001 thru 28-7505260	40-86	30-55	APS164-02000	APS66-10500	2	APS105-00200
PA-28R-180	All <sup>2</sup>	40-84 40-86	30-41 30-55	APS164-01900 APS164-02000	APS66-10600 APS66-10500	4 2	APS105-00200 APS105-00200
PA-28-181	All	40-86B	30-55	APS164-02000	APS66-10500	2	APS105-00200
PA-28R-200 <sup>1</sup>	28R-35001 thru 28R-7135109	40-84	30-41	APS164-01900	APS66-10600	4	APS105-00200
	28R-7135110 thru 28R-7635545	40-86 or 40-86B	30-55	APS164-02000	APS66-10500	2	APS105-00200
PA-28-201T, PA-28R-201	All	40-86B	30-55	APS164-02000	APS66-10500	2	APS105-00200
PA-28R-201T, PA-28RT-201	All	40-86B	30-55	APS164-02000	APS66-10500	2	APS105-00200
PA-28-235	28-7410001 thru 28-7710089	40-86	30-55	APS164-02000	APS66-10500	2	APS105-00200
PA-28-236	All <sup>2</sup>	40-86B	30-55	APS164-02000	APS66-10500	2	APS105-00200
		40-90A	30-65	APS164-02300	APS66-10500	4	APS105-00200
PA-30	30-2 - 30-845	40-34	30-23	APS164-01000	APS66-06500 <sup>5</sup>	2	APS177-00300
	30-846 thru 30-2000	40-90	30-23	APS164-02201	APS66-06200 <sup>5</sup>	2	
PA-31-300,310 <sup>1</sup>	31-5 thru 31-7300962	40-102	30-68	APS164-03506	APS66-03300	6	APS177-00400
PA-31-325	All	40-102A	30-68A	APS164-04406	APS66-03300	6	APS177-00400
PA-31-350 <sup>1</sup>	31-5001 thru 31-8452021	40-102A	30-68A	APS164-04406	APS66-03300	6	APS177-00400
		40-130	30-95A	APS164-07906	APS66-06600	8	APS177-01600
PA-31-350 <sup>1</sup> (T-1020)	Heavy Duty Option 31-8253001 thru 31-8453021	40-141	30-123	APS164-07700	APS66-06800	12	APS177-01600
		40-130	30-95A	APS164-07906	APS66-06600	8	APS177-01600
PA-31T1,2,3 (T-1020)	All	40-106	30-106	APS164-03906	APS66-06800	16	APS177-01600
PA-32-260	Heavy Duty Option 32-1 thru 32-7300076 32-7400001 thru 32-7800008 <sup>2</sup>	40-120	30-63	AOS164-21600	APS66-06200	4	APS177-00300
		40-90	30-65	APS164-02201	APS66-10500	4	APS105-00200
		40-90	30-65	APS164-02201	APS66-10500	4	APS105-00200
		40-90A	30-65	APS164-02300	APS66-10500	4	APS105-00200
PA-32-300	Heavy Duty Option 32-40000 thru 32-7440000 32-7440001 thru 32-7940290 <sup>2</sup>	40-120	30-83	APS164-21600	APS66-06200	4	APS177-00300
		40-90	30-65	APS164-02201	APS66-10500	4	APS105-00200
		40-90A	30-65	APS164-02300	APS66-10500	4	APS105-00200
PA-32R-300, PA-32RT-300	Heavy Duty Option All	40-120	30-83	APS164-21600	APS66-06200	4	APS177-00300
		40-90A	30-65	APS164-02300	APS66-10500	4	APS105-00200
PA-32RT-300T	Heavy Duty Option 32R-7887002 thru 32R-7987126	40-120 40-90A	30-83 30-65	APS164-21600 APS164-02300	APS66-06200 APS66-10500	4 4	APS177-00300 APS105-00200
PA-32-301, PA-32-301T	Heavy Duty Option All	40-120C	30-83A	APS164-21600	APS66-06200	4	APS177-00300
		40-90A	30-65	APS164-02300	APS66-10500	4	APS105-00200
PA-34-200	Heavy Duty Option 34-7250001 thru 34-7350353 34-7450001 thru 34-7450220 <sup>2</sup>	40-120	30-83	APS164-21600	APS66-06200	4	APS177-00300
		40-90	30-65	APS164-02201	APS66-10500	4	APS105-00200
		40-90	30-65	APS164-02201	APS66-10500	4	APS105-00200
		40-90A	30-65	APS164-02300	APS66-10500	4	APS105-00200

**Eligibility continued on next page**

# Brake and Wheel Parts

## Brake Discs and Linings



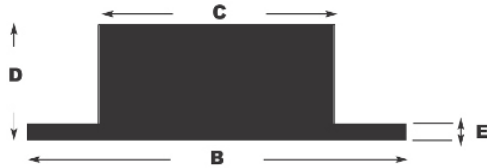
### APS BlackSteel® Brake Discs, Linings, and Rivets continued from previous page

Aircraft Model	Serial Number	Wheel Assy P/N	Brake Assy P/N	Brake Disc P/N	Lining P/N	Linings/ Wheel	Rivet or Pin P/N
<b>Piper continued from previous page</b>							
PA-34-200T	Heavy Duty Option	40-120	30-83	APS164-21600	APS66-06200	4	APS177-00300
	All	40-90A	30-65	APS164-02300	APS66-10500	4	APS105-00200
PA-34-220T	Heavy Duty Option	40-120	30-83A	APS164-21600	APS66-06200	4	APS177-00300
	All	40-90A	30-65	APS164-02300	APS66-10500	4	APS105-00200
PA-36-285, PA-36-300, PA-36-375	All	40-101	30-67B	APS164-03006	APS66-10800	4	APS105-00200
PA-38-112	All <sup>2</sup>	40-78B	30-9B	APS164-01700	APS66-10600	2	APS105-00200
		40-59D	30-53A	APS164-06900	APS66-11200	2	APS105-00200
PA-39	All	40-90	30-23	APS164-02201	APS66-06500 <sup>3</sup>	2	APS177-00300
					APS66-06200 <sup>3</sup>	2	
PA-44-180	Heavy Duty Option	40-120	30-83	APS164-21600	APS66-06200	4	APS177-00300
	All	40-90A	30-65	APS164-02300	APS66-10500	4	APS105-00200
PA-44-180T	All	40-120	30-83	APS164-21600	APS66-06200	4	APS177-00300
PA-46-310P, 350P	All	40-120C	30-83A	APS164-21600	APS66-06200	4	APS177-00300
PA-60-600,601,601P,700P	All	40-124	30-88	APS164-05006	APS66-02200	8	APS177-00300
<b>Pitts</b>							
A-1	All	40-60	30-60	APS164-06700	APS66-10600	4	APS105-00200
S-1S,2	All	40-79B	30-9	APS164-01700	APS66-10600	2	APS105-00200
<b>Quest Aircraft Design</b>							
Kodiak 100	All	40-179	30-182	APS164-22201	APS66-03300 <sup>6</sup> APS66-15300 <sup>6</sup>	8	APS177-00300
<b>Revo Inc (formerly Lake)</b>							
LA-4 series, LA-4-200	All			APS164-A1634B			
<b>SAAB-Scania</b>							
MF1-15, MF1-17	All	40-97D	30-63D	APS164-02601	APS66-10500	2	APS105-00200
<b>Sadler Aircraft</b>							
A-22 Lasa, 18-1000PV	All	40-78B	30-9	APS164-01700	APS66-10600	2	APS105-00200
<b>Schleicher</b>							
ASW21, 20, 22, 23 Sailplane	All	40-78B	30-9	APS164-01700	APS66-10600	2	APS105-00200
<b>Shaefer Aircraft mods</b>							
PA-31-350 Comanchero 500	All	40-195	30-158	APS164-21900	APS66-06800	12	APS177-01600
PA-31T Comanchero 750	All	40-106	30-106	APS164-03906	APS66-06800	16	APS177-01600
<b>SIAI Marchetti</b>							
SF.205	All	40-97E	30-63M	APS164-02601	APS66-10500	2	APS105-00200
SF.260, SF.260C	All	40-3	30-13	159-00200 <sup>4</sup>	APS66-10500	4	APS105-00200
SF.260SW	All	40-90A	30-65A	APS164-02300	APS66-10500	4	APS105-00200
<b>Slingsby Aviation</b>							
T67M	All	40-86B	30-55	APS164-02000	APS66-10500	2	APS105-00200
<b>Stinson</b>							
108, 108-1,2,3,5	108-1 and up	40-28	30-18	APS164-00500	APS66-10600	2	APS105-00200
<b>Stol Aircraft</b>							
UC-1	All	40-74	30-51A	APS164-00700	APS66-10600	4	APS105-00200
<b>Taylorcraft</b>							
F-19, F-21, F-21A ,F-22	All	40-86	32-55	APS164-02000	APS66-10500	2	APS105-00200
<b>Univair</b>							
A-2, A-2A	All	40-97A	30-63A	APS164-02601	APS66-10500	2	APS105-00200
<b>Varga</b>							
2150A, 2180	VAC-50 and up	40-97E	30-63E	APS164-02601	APS66-10500	2	APS105-00200
<b>Waco</b>							
Meteor, Minerva, Vela	All	40-97A	30-63A	APS164-02601	APS66-10500	2	APS105-00200
<b>Weatherly Aviation</b>							
201A, 201B, 201C	All	40-101	30-67D	APS164-03006	APS66-10800	4	APS105-00200
620, 620TP	1501 thru 1519	40-101	30-67D	APS164-03006	APS66-10800	4	APS105-00200
620A	1520 thru 1584	40-101	30-67D	APS164-03006	APS66-10800	4	APS105-00200
		40-101	30-89B	APS164-03006	APS66-10800	6	APS105-00200
620B	1550 and up	40-101		APS164-03006	APS66-10800	4	APS105-00200
	1520 and up	40-101 or 40-101E		APS164-03006	APS66-10800	6	APS105-00200
620TP	1520 thru 1584	40-101		APS164-03006	APS66-10800	6	APS105-00200
<b>Wing Aircraft</b>							
D-1	2 and up	40-84		APS164-01900	APS66-10600	4	APS105-00200

<sup>1</sup> Partial model eligibility  
<sup>2</sup> Must verify wheel or brake assembly P/N  
<sup>3</sup> OEM lining must be used  
<sup>4</sup> OEM disc must be used  
<sup>5</sup> Use P/N APS66-06200 on the back plate and P/N APS66-06500 on the pressure plate.  
<sup>6</sup> If 30-182A calipers installed, use APS66-15300 linings. If 30-182 calipers installed, use either APS66-03300 or APS66-15300 linings in complete sets. **Caution:** Never mix APS66-03300 linings on the same caliper as the APS66-15300's. APS66-15300 linings are .035" thicker than the APS66-03300's.  
<sup>7</sup> Complete Brake Kit P/N 208-BRK-KT-1 contains: brake discs, brake linings, pins, bleeder seat, bleeder needle, needle cap, and O-ring.

Brake and Wheel Parts

**APS BlackSteel® Brake Disc Dimensions**



Brake and Wheel Parts

Brake Disc Part Number	B	C	D	E	F	OEM Brake Mfg
	OD Wear	OD Base	Overall Height	Thickness Wear Surface	Number Bolt Holes	
APS164-00206	7.31	5.52	1.50	0.683	3 (1/4")	Cleveland
APS164-00300	7.50	5.49	2.16	0.231	3 (5/16")	Cleveland
APS164-00400	6.36	4.51	1.71	0.191	3 (1/4")	Cleveland
APS164-00500	7.30	5.52	1.97	0.182	3 (1/4")	Cleveland
APS164-00700	7.30	5.53	2.25	0.372	3 (1/4")	Cleveland
APS164-00806	11.63	9.52	2.42	0.361	9 (1/4")	Cleveland
APS164-00900	7.30	5.52	2.03	0.253	3 (1/4")	Cleveland
APS164-01000	7.50	5.53	2.10	0.370	6 (1/4")	Cleveland
APS164-01100	7.50	5.53	2.17	0.373	6 (5/16")	Cleveland
APS164-01300	7.31	5.53	2.29	0.256	3 (1/4")	Cleveland
APS164-01406	11.63	9.34	2.32	0.362	9 (1/4")	Cleveland
APS164-01501	7.49	5.49	2.34	0.368	3 (5/16")	Cleveland
APS164-01506	7.50	5.48	2.37	0.374	3 (5/16")	Cleveland
APS164-01600	7.31	5.48	2.18	0.184	3 (5/16")	Cleveland
APS164-01700	6.36	4.47	2.06	0.183	3 (1/4")	Cleveland
APS164-01900	7.30	5.49	2.09	0.254	3 (5/16")	Cleveland
APS164-02000	7.49	5.49	2.16	0.228	3 (5/16")	Cleveland
APS164-02201	7.49	5.49	2.25	0.372	3 (5/16")	Cleveland
APS164-02300	7.49	5.49	2.25	0.372	3 (5/16")	Cleveland
APS164-02504	7.49	5.49	2.36	0.478	3 (5/16")	Cleveland
APS164-02505	7.49	5.60	2.47	0.480	3 (5/16")	Cleveland
APS164-02601	7.59	5.50	2.22	0.230	3 (5/16")	Cleveland
APS164-02706	9.62	7.37	2.42	0.366	6 (5/16")	Cleveland
APS164-02707	9.62	7.35	2.53	0.380	6 (21/64")	Cleveland
APS164-02800	7.31	5.53	2.03	0.260	6 (1/4")	Cleveland
APS164-03006	11.62	9.35	2.49	0.304	9 (1/4")	Cleveland
APS164-03106	11.63	9.35	2.50	0.190	9 (1/4")	Cleveland
APS164-03206	7.50	5.20	1.50	0.690	3 (1/4")	Cleveland
APS164-03300	7.313	5.50	2.38	0.257	3 (5/16")	Cleveland
APS164-03506	11.63	9.34	4.22	0.290	9 (1/4")	Cleveland
APS164-03601	7.49	5.49	2.62	0.368	3 (5/16")	Cleveland
APS164-03906	11.81	9.34	2.46	0.645	9 (5/16")	Cleveland
APS164-04000	7.49	5.49	2.18	0.228	3 (1/4")	Cleveland
APS164-04406	11.63	9.36	2.43	0.380	9 (9/32")	Cleveland
APS164-05500	11.853	9.35	2.41	0.525	9 (21/64)	Cleveland
APS164-05806	11.62	9.35	2.72	0.429	9 (5/16")	Cleveland
APS164-06106	9.62	7.49	2.65	0.515	6 (3/8")	Cleveland
APS164-06700	7.35	5.48	2.38	0.253	6 (1/4")	Cleveland
APS164-07200	11.81	8.28	2.66	0.533	8 (23/64")	Cleveland
APS164-07700	11.90	9.35	2.41	0.520	9 (5/16")	Cleveland
APS164-07800	7.50	5.50	2.36	0.484	6 (21/64")	Cleveland
APS164-07906	11.63	9.36	2.58	0.500	9 (1/4")	Cleveland
APS164-08300	7.49	5.49	2.62	0.371	6 (5/16")	Cleveland
APS164-08500	6.38	4.48	2.23	0.371	3 (1/4")	Cleveland
APS164-09100	11.85	9.35	2.53	0.535	9 (21/64")	Cleveland
APS164-20306	11.63	9.34	2.50	0.504	9 (5/16")	Cleveland
APS164-21600	7.50	5.48	2.24	0.431	6 (5/16")	Cleveland
APS164-22000	11.85	8.00	2.55	0.417	6 (3/8")	Cleveland
APS164-22202	11.62	9.34	2.78	0.567	9 (21/64")	Cleveland
APS164-22400	13.90	10.02	3.50	0.430	9 (3/8")	Cleveland
APS164-24200	6.38	4.50	2.16	0.190	3 (1/4")	Cleveland
APS164-24400	7.53	5.48	2.26	0.320	3 (5/16")	Cleveland
APS164-24500	7.50	5.50	2.44	0.371	6 (5/16")	Cleveland
APS164-30007	7.49	5.49	1.97	0.221	6 (1/4")	McCauley
APS164-30195	7.50	5.49	2.07	0.225	6 (5/16")	McCauley
APS164-30388	7.50	5.49	2.34	0.355	6 (5/16")	McCauley
APS164-30398	7.50	5.49	2.10	0.355	6 (5/16")	McCauley
APS164-30414	7.50	5.49	2.16	0.355	6 (5/16")	McCauley
APS164-30440	7.50	5.49	1.97	0.215	6 (5/16")	McCauley
APS164-30615-2	7.50	5.50	1.52	0.215	3 (5/16")	McCauley
APS164-30615-3	7.50	5.50	1.89	0.355	3 (5/16")	McCauley
APS164-30615-4	7.50	5.50	1.66	0.355	3 (5/16")	McCauley

This is not a complete list of all brake discs offered. Please visit [www.mcfarlaneaviation.com](http://www.mcfarlaneaviation.com) for additional dimensions.

## Brake and Wheel Parts Brake Discs and Linings



### APS Brake Discs, Linings, and Rivets for Aircraft with Cleveland Conversion Kits Installed (Includes Experimental Aircraft)

Aircraft Model	Cleveland Kit P/N	Wheel Assy P/N	Brake Assy P/N	Brake Disc P/N	Lining P/N	Linings per Wheel	Rivet or Pin P/N
<b>Aero Commander</b>							
100 - 180 Lark	199-188	40-86A	30-56F	APS164-02000	APS66-10500	2	APS105-00200
<b>American Homebuilts</b>							
STOL	199-105C	40-113X	30-75X	APS164-04000	APS66-10500	2	APS105-00200
<b>Ayres</b>							
S-2R Thrush	199-68A	40-33	30-98A	APS164-05806	APS66-10800	12	APS105-00200
<b>Beechcraft</b>							
A23-19,19A,M19A, B19, 23,A23,A23A,B23,C23,A23-24,A24R	199-125	40-113C	30-75B	APS164-04300	APS66-10500	2	APS105-00200
D18C,S; E18S,E18S-9700, G18S,H18,C45G, TC-45G, RC-45J, TC-45H, 45J, UC-45J, JRB-6	199-127	40-170	30-144B	APS164-20900		8	APS177-01600
	199-141	40-21101	30-170	APS164-22400	APS66-10000	8	APS177-01600
35,A35,B35,C35,D35,E35,F35,G35,35R, 35-33, 35-A33,B33, C33, C33A,E33A,F33,F33A,C,G33, H35,J35,K35,M35,N35,P35,S35,V35, V35A,B, A36	199-49	40-83	30-54	APS164-02504	APS66-10500	4	APS105-00200
35,A35,B35,C35,D35,E35,F35,G35,35R,H35, J35,K35,M35, N35, P35,S35,45 (Ty-34), A45 (T34A), B45,D45 (T-34B),D55,D55A,E55, E55A,95,B95A, D95A, E95, 95-55, A55,B55,B55A,B55B,C55,C55A	199-50	40-98	30-66	APS164-02706	APS66-04400	4	APS177-00300
50,B50,C50,D50,D50A,B,C,E,E50,F50,G50,H50,J50	199-88	40-134A	30-99	APS164-06306	APS66-06600	8	APS177-00300
D55,D55A,E55,E55A,58,58A, 95, B95,B95A,D95A,E95,95-55, A55, B55,B55A,B55B,C55,C55A	199-38	40-128D	30-93C	APS164-06106	APS66-09700	6	APS177-00300
58P,58TC,60,A60,B60	199-73	40-128	30-93	APS164-06106	APS66-04400	6	APS177-00300
65,A65,70,65-80,A80,B80,88	199-123	40-170B	30-144A	APS164-22900		8	APS177-01600
A90,B90,C90,90A,E90,H90,65-A90-1,2,3,4	199-90	40-170A	30-144	APS164-20900		8	APS177-01600
F90,99,99A,A99A,B99,C99,100,A100,B100,200, 200C,CT,T, A200,A200C,CT, B200,B200C,CT,T	199-110	40-289	30-146	APS164-21000	APS66-09100	2	N/A
<b>Cessna</b>							
120, 140,140A	199-46	40-97A	30-63A	APS164-02601	APS66-10500	2	APS105-00200
150, A150, F150, FA150, A152, F152, FA152	199-84	40-113	30-75	APS164-04000	APS66-10500	2	APS105-00200
170,A,B	199-46	40-97A	30-63A	APS164-02601	APS66-10500	2	APS105-00200
172, F172, FR172, R172	199-84A	40-113	30-75A	APS164-04000	APS66-10500	2	APS105-00200
172, A,B,C,D,E, P172D	199-46	40-97A	30-63A	APS164-02601	APS66-10500	2	APS105-00200
175,A,B,C	199-46	40-97A	30-63A	APS164-02601	APS66-10500	2	APS105-00200
177	199-84	40-113	30-75	APS164-04000	APS66-10500	2	APS105-00200
177RG	199-84	40-113	30-75	APS164-04000	APS66-10500	2	APS105-00200
180, 180A,B,C,D,E,F	199-46	40-97A	30-63A	APS164-02601	APS66-10500	2	APS105-00200
180, 180A,B,C,D,E,F,H,J	199-60	40-75B	30-52	APS164-01501	APS66-10500	4	APS105-00200
180, 180A,B,C,D,E,F,H,J,K	199-62	40-75D	30-52N	APS164-03601	APS66-10500	4	APS105-00200
	199-155	40-75J	30-52Y	APS164-03601	APS66-10500	4	APS105-00200
182, A182J,K,L,N, F182P,Q	199-84	40-113	30-75	APS164-04000	APS66-10500	2	APS105-00200
182, 182A,B,C,D,E,F,G	199-46	40-97A	30-63A	APS164-02601	APS66-10500	2	APS105-00200
185, 185A,B,E	199-62	40-75D	30-52N	APS164-03601	APS66-10500	4	APS105-00200
	199-155	40-75J	30-52Y	APS164-03601	APS66-10500	4	APS105-00200
185,A,B	199-60	40-75B	30-52	APS164-01501	APS66-10500	4	APS105-00200
A185E,F	199-60	40-75B	30-52	APS164-01501	APS66-10500	4	APS105-00200
	199-155	40-75J	30-52Y	APS164-03601	APS66-10500	4	APS105-00200
A185F	199-62	40-75D	30-52N	APS164-03601	APS66-10500	4	APS105-00200
190, 195, 195A,B	199-61	40-40C	30-28C	APS164-00806	APS66-03300	6	APS177-00400
U206E,F, TU206E,F	199-60	40-75B	30-52	APS164-01501	APS66-10500	4	APS105-00200
	199-155	40-75J	30-52Y	APS164-03601	APS66-10500	4	APS105-00200
TU206E,F,G	199-62A	40-75T	30-52N	APS164-08300	APS66-10500	4	APS105-00200
U206E,F, TU206E,F	199-155	40-75J	30-52Y	APS164-03601	APS66-10500	4	APS105-00200
U206E,F, TU206E,F	199-62	40-75D	30-52N	APS164-03601	APS66-10500	4	APS105-00200
210,A,B,C,K,L,M, T210,K,L,M,N	199-60	40-75B	30-52	APS164-01501	APS66-10500	4	APS105-00200
P210N	199-60A	40-75B	30-52U	APS164-01501	APS66-10500	4	APS105-00200
310,310A,B,C,D,E,F,G,H,I,J,K,L,N,P,Q,R 310J-1, E310H,J, T310P,Q,R	199-64	40-40B	30-1	APS164-01406	APS66-03300	2	APS177-00400
340, 340A	199-76	40-135A	30-100	APS164-20306	APS66-06600	8	APS177-01600
340, 340A	199-72	N/A	30-100	APS164-06406	APS66-06600	8	APS177-01600
401,401A,B, 402,402A,B	199-76	40-135A	30-100	APS164-20306	APS66-06600	8	APS177-01600
	199-72	N/A	30-100	APS164-06406	APS66-06600	8	APS177-01600

**Eligibility continued on next page**

### APS Brake Discs, Linings, and Rivets for Aircraft with Cleveland Conversion Kits Installed

Continued from previous page  
(Includes Experimental Aircraft)

Aircraft Model	Cleveland Kit P/N	Wheel Assy P/N	Brake Assy P/N	Brake Disc P/N	Lining P/N	Linings per Wheel	Rivet or Pin P/N
<b>Cessna continued from previous page</b>							
402,402A,B,C	199-76	40-135A	30-100	APS164-20306	APS66-06600	8	APS177-01600
404	199-78	40-132	30-97	APS164-09100	APS66-06400	8	APS177-01600
411,411A, 414	199-72	N/A	30-100	APS164-06406	APS66-06600	8	APS177-01600
414,414A, 421,421A,B,C	199-76	40-135A	30-100	APS164-20306	APS66-06600	8	APS177-01600
441	199-115	40-169	30-143	APS164-20700	APS066-07300	6	APS177-01600
<b>D.L.F. Holdings</b>							
Tango	199-152	40-151	30-133	164-09900 <sup>2</sup>	APS66-10500	2	APS105-00200
<b>De Havilland</b>							
Chipmunk DHC-1-21,22,22A, DHC-1B,-2, -S3,-S5	199-79	40-97D	30-63P	APS164-02601	APS66-10500	2	APS105-00200
Beaver DHC-2 MK 1,2,3	199-95	40-134	30-99	APS164-06306	APS66-06600	8	APS177-01600
Twin Otter DHC-6-1,100,200,300	199-92	40-21101	30-170	APS164-22400	APS66-10000	8	APS177-01600
<b>Ercoupe</b>							
415-C, CD, D, E, F-1, F-1A <sup>5</sup> , G	199-69	40-41	30-30	APS164-00300	APS66-10500	2	APS105-00200
<b>Explorer Aeronautique</b>							
Private Explorer Std	199-62	40-75D	30-52N	APS164-03601	APS66-10500	4	APS105-00200
Private Explorer Float	N/A	40-101	30-67B	APS164-03006	APS66-10800	4	APS105-00200
<b>Express Aircraft</b>							
Express 2000/2000RG	199-60	40-75B	30-52	APS164-01501	APS66-10500	4	APS105-00200
<b>Four Winds Aircraft</b>							
192/210/250T	199-60	40-75B	30-52	APS164-01501	APS66-10500	4	APS105-00200
<b>Globe Swift</b>							
GC1A, GC1B	199-48	40-113C	30-79B	APS164-04300	APS66-10500	2	APS105-00200
<b>Gulfstream Aerospace</b>							
500,A,B,S,U	199-122	40-198	30-159B	APS164-22000		8	APS177-01600
500,A,B,S,U	199-122A	40-198	30-159C	APS164-22000		8	APS177-01600
560F,680F, FL.FLP,T,V,W,681, 685, 690, 690A,B,C,D, 695,A,B	199-80	40-107A	30-107E	APS164-07200		8	APS177-01600
<b>Hensely Aircraft</b>							
F-19 Wolf Aerobatic	199-46	40-97A	30-63A	APS164-02601	APS66-10500	2	APS105-00200
F-19 Wolf Utility	199-62	40-75B	30-52	APS164-01501	APS66-10500	4	APS105-00200
<b>Lancair</b>							
IV High Energy, Energy Upgrade	199-224, 224A	40-406	30-233	APS164-02504	APS66-06200	4	APS177-00300
IV Standard	199-208	40-963	30-61E	APS164-02504	APS66-10500	4	APS105-00200
Legacy FG/RG	199-152	40-151	30-133	164-09900 <sup>2</sup>	APS66-10500	2	APS105-00200
<b>Murphy Manufacturing</b>							
Rebel	199-71	40-60A	30-60A	APS164-06700	APS66-10600	4	APS105-00200
<b>Navion</b>							
A,B,D,E,F,G,H	199-52/ 199-52A	40-98D	30-66B	APS164-02707	APS66-11000	4	APS105-00200
<b>Piper</b>							
J3, PA-11,12,13,14,15,16,17,18,20	199-71A	40-97D	30-60A	APS164-02601	APS66-10600	4	APS105-00200
	199-71	40-60	30-60A	APS164-06700	APS66-10600	4	APS105-00200
PA-18A-150	199-71A	40-97D	30-60A	APS164-02601	APS66-10600	4	APS105-00200
	199-71	40-60	30-60A	APS164-06700	APS66-10600	4	APS105-00200
PA-31, -300,325,350	199-100	40-162	30-138	APS164-07700	APS66-06800	12	APS177-01600
PA-31-310,325,350	199-66	N/A	30-95A	APS164-07906	APS66-06600	8	APS177-01600
PA-31P (425 HP), PA31-350	199-83	40-141	30-123	APS164-07700	APS66-06800	12	APS177-01600
PA-31-350 <sup>4</sup>	199-119	40-198	30-158	APS164-21900	APS66-06800	12	APS177-01600
PA-31T, PA-3T1	199-89	40-106	30-106	APS164-03906	APS66-06800	16	APS177-01600
PA-31T2	199-111	40-167	30-142	APS164-20600	APS066-07300	8	APS177-01600
PA-42, PA-42-720	199-112	40-166	30-141	APS164-07400	APS066-07300	8	APS177-01600
<b>Pitts</b>							
Pitts Special	199-103	40-78J	30-9C	APS164-01700	APS66-10600	2	APS105-00200
S1-S	199-102	40-78B	30-9	APS164-01700	APS66-10600	2	APS105-00200
<b>RANS</b>							
S-16	199-102	40-78B	30-9	APS164-01700	APS66-10600	2	APS105-00200
S-7C	199-104	40-59A	30-59A	APS164-07500 <sup>3</sup>	APS66-11200	2	APS105-00200

**Eligibility continued on next page**

## Brake and Wheel Parts Brake Discs and Linings

### APS Brake Discs, Linings, and Rivets for Aircraft with Cleveland Conversion Kits Installed Continued from previous page (Includes Experimental Aircraft)

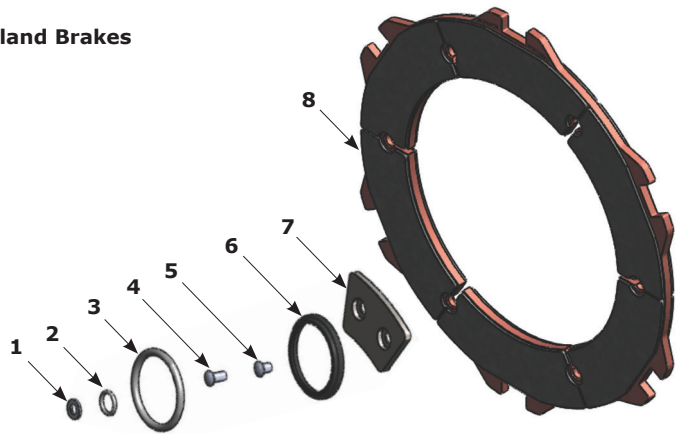
Aircraft Model	Cleveland Kit P/N	Wheel Assy P/N	Brake Assy P/N	Brake Disc P/N	Lining P/N	Linings per Wheel	Rivet or Pin P/N
<b>Skystar Aircraft</b>							
Kit Fox	199-215	40-281	30-224	164-23400 <sup>2</sup>	APS66-10500	2	N/A
Pulsar	199-102	40-78B	30-9	N/A	APS66-10600	2	APS105-00200
<b>Steen Aero Lab</b>							
Skybolt	199-104	40-59A	30-59A	APS164-07500 <sup>3</sup>	APS66-11200	2	APS105-00200
	199-105	40-113X	30-75X	APS164-04000	APS66-10500	2	APS105-00200
<b>Swift</b>							
GC-1A, GC-1B	199-98	40-113C	30-79B	APS164-04300	APS66-10500	2	APS105-00200
<b>Univair</b>							
108 Series	188-87	40-97D	30-63Q	APS164-02601	APS66-10500	2	APS105-00200
<b>Van's Aircraft</b>							
RV-3, RV-9	199-102	40-75B	30-9	APS164-01700	APS66-10600	2	APS105-00200
RV-10	199-104	40-59A	30-59A	APS164-07500 <sup>3</sup>	APS66-11200	2	APS105-00200
<b>Velocity Aircraft</b>							
SE/XL	199-60	40-75B	30-52	APS164-01501	APS66-10600	4	APS105-00200

- <sup>1</sup> Partial model eligibility
- <sup>2</sup> OEM brake disc or lining must be used, this part is not FAA-PMA approved.
- <sup>3</sup> This part is not FAA-PMA approved
- <sup>4</sup> Modified by Schaefer STC SA678SW
- <sup>5</sup> S/N 813 and on

### APS BlackSteel® Brakes for Pilatus PC-12 Cost effective replacement brake parts for the PC-12 with Cleveland Brakes

- All parts are FAA-PMA approved
- Longer wear life
- Parts are offered individually or as a convenient brake overhaul kit

Brake Overhaul Kit P/N APS199-575A			
P/N	Description	Qty	Index
APS095-01100	Washer-seal	1	1
APS101-00700	O-ring	2	2
APS101-02500	O-ring	6	3
APS105-02401	Rivet	48	4
APS105-08701	Rivet	48	5
APS107-03700	Scraper	6	6
APS109-03000	Wear Pad	72	7
APS159-07400	Rotor Assembly	3	8
APS88-03800	Insulator	6	



### APS Blacksteel Brakes for Caravan Aircraft Improve braking performance!

- One piece forged disc eliminates weld failure
- Heat treated to reduce corrosion & rust
- FAA-PMA Approved

### APS Extended Life Brake Lining Reduce cost per landing

- Lining is .035" thicker
- 35% longer life!
- FAA-PMA Approved

APS164-22201-1 Kit Components		
P/N	Description	Qty
APS164-22201	Brake Discs	2
APS66-15300	Brake Linings	16
APS177-00300	Pins	32

