

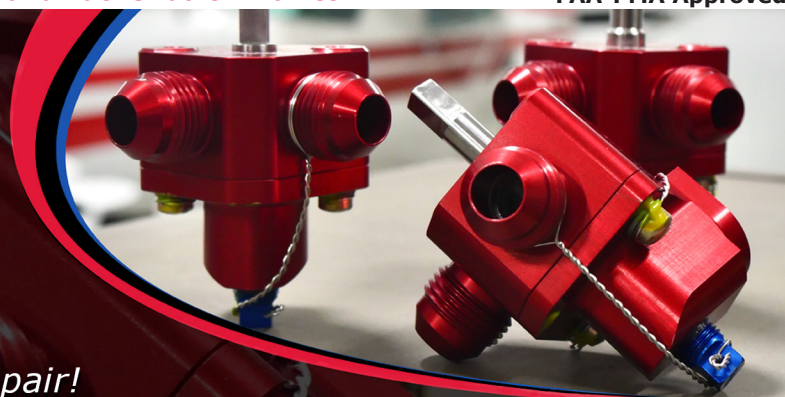
Fuel Valves

FAA-PMA approved for Cessna
170, 172, 175, 177, 182, and 185

SAVE MONEY!

Buy yours new, or send in for repair!

Improved durability and corrosion resistance



Fuel Selector and Fuel Shut-Off Valves For Cessna Aircraft

Buy a new FAA-PMA approved valve, or purchase an overhauled valve

Many valves are in stock and ready to ship!

- Overhauled by experienced technicians
- Cleaned, inspected and assembled with all fluorocarbon O-rings, seals, gaskets, hardware and parts as required
- "Return to Service" tag provided
- Pressure tested for leaks and evaluated for proper fuel flow
- McFarlane has FAA-PMA approval to use Fluorocarbon O-rings



Repair Kits, Seal Kits, Gaskets, Fittings, O-rings, and Replacement Parts also available! See following pages.

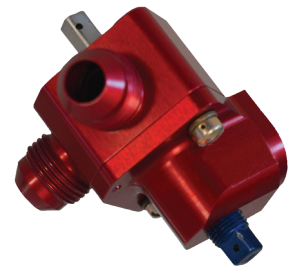
Eligibility on the next page



New FAA-PMA Fuel Valves at Realistic Prices!
Cessna 150, 152, 170, 172, 175, 177, 182 and 185

Why not just repair my valve?

Many of the original valves have too much damage to be repaired cost-effectively. The original Cessna fuel valve that started in model 170 was a simple but ingenious cam ball design that has proven very reliable over the years. We have repaired a lot of these original Cessna valves, and we know them well. However, we are now rejecting a big percentage of the valve cores sent to us. A lot of them have corrosion damage in the main body that is too severe to fix, or the O-ring retention area is damaged and too rough to seal. Many of the fittings are corroded through. The cam bearing is brass and easily corrodes the aluminum alloy cam. Due to the poor condition of many original valves, McFarlane developed a totally new valve that was **designed just like the original valve but with improvements where needed.**



Better Corrosion Resistance

McFarlane's new fuel valves are totally anodized where the original valves were Alodine® conversion coated. This change drastically improves the surface durability, wear resistance, and corrosion resistance of all the components! Corrosion protection is important since the valves are at the lowest point in the fuel system without any upstream water separation or contaminate screening. We have also eliminated the brass bushing that corrodes the cam.

Improved O-ring Retention

Modern machining processes lets us precision machine the O-ring capture cavity. The original valve O-rings were retained by staking (stamp forming) the housing. This process was inconsistent at best and distressed and weakened the surrounding aluminum structure.

More Balanced Fuel Flow

Yesterday's manual machining process of the original fuel valves were often inconsistent enough to let one port flow more fuel than needed while the other port might flow a very marginal amount of fuel. Our new and improved McFarlane valves are computer machined for a perfect balance of fuel flow.

You can rest assured that if it's our new McFarlane valve or repaired by us, it will be pressure, functional, and flow tested!

Now for more good news! All the improved parts in our new valve are **interchangeable with the original Cessna valve.** This means that if your valve is in good condition (with the exception of a few parts), we can fix it at a reasonable price! Whether you need your valve overhauled or a new valve, we will save you money.

Fuel Valve Repair Kits, Seal Kits, Gaskets, Fittings, and O-rings

Repair Kits

P/Ns FSO-KT-1 thru FSO-KT-24

- Contains all required hardware to reseal and perform a repair
- Seals, springs, O-rings, roll pins, washers, screws, balls and plug
- FSO-KT-1 for 0716613 series valves includes the parts contained in Cessna P/N 0716613-200 and -201 seal kits plus additional hardware required for a basic repair
- All parts are FAA approved or certified industry standard hardware.



Many Cessna Fuel Valves (including 0716613 series) require special tools and processes for reassembly.

It's often more cost effective to have McFarlane overhaul your valve.

Seal Kits

P/Ns FSS-KT-1 thru FSS-KT-20

Only McFarlane has FAA approval to replace old, less fuel resistant O-rings with the latest fuel-proof fluorocarbon O-rings!

- Includes all necessary O-rings and/or gaskets applicable to specific single engine Cessna aircraft models
- Replace old MS or NAS series O-rings with Fluorocarbon for improved fuel and heat resistance
- Cork/Rubber gaskets meet tough government standards for fuel resistance

Gaskets, Fittings and O-rings

- Gaskets are available individually or as convenient kits
- O-rings are available in quantities of 10 each or as convenient kits!
- Commonly replaced AN fittings in stock!
- 45° plug P/N AN823-8D and 90° plug P/N MS20822-8D



Replacement Parts

- Complete line of replacement parts for Cessna fuel valves
- Detent plates, springs, plastic seals, cams and more in-stock!
- Common components for McFarlane and Cessna valves on following pages

Critical ordering tip: on models 172M and F172M, (S/Ns 17260759 thru 17267584, and F17200905 thru F17201514) that before ordering, you should identify the detent housing style of your current fuel valve. Order either MC0513120-8 or MC0513120-200 based on the style installed on your aircraft.



Cessna Fuel Selector and Shut Off Valves and Kits

Model	Serial Number	Fuel Selector Valve			Fuel Shut-Off Valve		
		McF P/N ⁵	Seal Kit	Repair Kit	McF P/N ⁵	Seal Kit	Repair Kit
120,140	8001 thru 15075	0411716S, 08HD1/4X1/4X1S					
140A	15200 thru 15724	0413020-3S					
150 ¹	17001 thru 17769				0411803-2S, 9851078-2 ³		
150 ¹ , 150A,B,C,D,E,F,G	17770 thru 15067198	MC9851078-4 New!			0411803-5S 0411803-6S		
150H,J,K,L ¹	15067199 thru 15073658	MC9851078-4 New!			0411803-6S		
150L ¹ ,M ¹	15073659 thru 15078505	MC9851078-4 New!			0411803-8S		
150M ¹	15078506 thru 15079405	MC9851070-2 New!			9851070-2S	FSS-KT-1	FSO-KT-2
A150K,L ¹	A1500001 thru A1500342	MC9851078-4 New!			0411803-6S		
A150L ¹	A1500343 thru A1500523	MC9851078-4 New!			0411803-8S		
A150L ¹ ,M ¹	A1500524 thru A1500684	MC9851078-4 New!			0411803-8S		
A150M ¹	A1500685 thru A1500734	MC9851070-2 New!			9851070-2S	FSS-KT-1	FSO-KT-2
A-A150L ¹	A-A1500001 thru A-A1500006				0411803-6S		
A-A150L ¹	A-A1500007 thru A-A1500009				0411803-8S		
F150F,G,H,J,K,L ¹	F150-0001 thru F15000863	MC9851078-4 New!			0411803-6S		
F150L ¹ ,M ¹	F15000864 thru F15001338	MC9851078-4 New!			0411803-8S		
F150M ¹	F15001339 thru F15001428	MC9851070-2 New!			9851070-2S	FSS-KT-1	FSO-KT-2
FA150K,L ¹	FA1500001 thru FA1500166	MC9851078-4 New!			0411803-6S		
FA150L ¹ ,M ¹	FA1500167 thru FA1500311	MC9851078-4 New!			0411803-8S		
FA150M ¹	FA1500312 thru FA1500336	MC9851070-2 New!			9851070-2S	FSS-KT-1	FSO-KT-2

¹ Partial model eligibility
² Use FSS-KT-3 and FSO-KT-8 if equipped with air conditioner **MC prefix P/Ns will be a new McFarlane manufactured part**
³ Part number listed for reference only
⁴ The detent housing type must be verified by our technician before purchasing exchange unit from our stock. Please call 888-624-3153.
⁵ The "S", "SF" or "SP" suffix indicates a McFarlane repaired valve. The applicable Cessna part number is the McFarlane part number without the suffix. Reference the Cessna part number for all maintenance procedures.
⁶ FSO-KT-4 only works with valve S1903-2S
⁷ It is critical on model 172M, S/N 17260759 thru 17267584 that before ordering you identify the detent housing style your fuel valve has. See pictures at the top of the page.

Eligibility continued on next page

Fuel Sytem Fuel Selector and Fuel Shut-Off Valves

Cessna Fuel Selector and Shut Off Valves and Kits continued from previous page							
Model	Serial Number	Fuel Selector Valve			Fuel Shut-Off Valve		
		McF P/N ⁵	Seal Kit	Repair Kit	McF P/N ⁵	Seal Kit	Repair Kit
FRA150L ¹	FRA1500121 thru FRA1500166				0411803-6S		
FRA150L ¹ ,M ¹	FRA1500167 thru FRA1500311				0411803-8S		
FRA150M ¹	FRA1500312 thru FRA1500336				9851070-2S	FSS-KT-1	FSO-KT-2
152/A152/ F152/FA152	All	MC9851070-2 <i>New!</i>			9851070-2S	FSS-KT-1	FSO-KT-2
170 ¹	18003 thru 18573	0511122S ³					
170 ¹	18574 thru 18729	0511160S					
170A,B ¹	18730 thru 20285	0413020-3S					
170B ¹	20286 thru 27169	MC0513120-5	FSS-KT-2	FSO-KT-17			
172, 172A,B,C	28000 thru 17249544	MC0513120-5	FSS-KT-2	FSO-KT-17			
172D,E	17249545 thru 17251822	MC0513120-6	FSS-KT-2	FSO-KT-17			
172F,G,H,I,K,L,M ¹	17251823 thru 17263458	MC0513120-8 ⁷	FSS-KT-2	FSO-KT-17			
172M ¹	17263459 thru 17267584	MC0513120-200 ⁷	FSS-KT-2	FSO-KT-17			
172N,P ¹	17267585 thru 17275034	9851067-4S	FSS-KT-5	FSO-KT-13			
172P ¹ , Q	17275035 thru 17276259	9851096-2S, 9851096-5S	FSS-KT-4 ²	FSO-KT-7 ²			
172P ¹	17276260 thru 17276654	9851096-5S	FSS-KT-4 ²	FSO-KT-7 ²			
172R,S	17280001 & On, 172S8001 & On	9851096-5S	FSS-KT-4	FSO-KT-7	S1903-2		
172RG ¹	172RG0001 thru 172RG0890	9851067-7S	FSS-KT-4	FSO-KT-15			
172RG ¹	172RG0891 thru 172RG1177	9851096-2S, 9851096-5S	FSS-KT-4	FSO-KT-7			
172RG ¹	172RG1178 thru 172RG1191	9851096-5S	FSS-KT-4	FSO-KT-7			
F172D,E	F172-0001 thru F172-0085	MC0513120-6	FSS-KT-2	FSO-KT-17			
F172F,G,H,K,L,M ¹	F172-0086 thru F17201234	MC0513120-8 ⁷	FSS-KT-2	FSO-KT-17			
F172M ¹	F17201235 thru F17201514	MC0513120-200 ⁷	FSS-KT-2	FSO-KT-17			
F172N,P ¹	F17201515 thru F17202134	9851067-4S	FSS-KT-5	FSO-KT-13			
F172P ¹	F17202135 thru F17202254	9851096-2S, 9851096-5S	FSS-KT-4 ²	FSO-KT-7 ²			
FR172E,F,G,H,J ¹	FR17200001 thru FR17200390	MC0513120-8	FSS-KT-2	FSO-KT-17	0716111-1SF	FSS-KT-16	FSO-KT-3
FR172J ¹	FR17200391 thru FR17200530	MC0513120-8	FSS-KT-2	FSO-KT-17	0716111-2S ³		
FR172J ¹	FR17200531 thru FR17200590	MC0513120-200	FSS-KT-2	FSO-KT-17			
R172K, FR172K	All	MC0513120-200	FSS-KT-2	FSO-KT-17	0716109-1S	FSS-KT-17	FSO-KT-5
P172/FP172	All	MC0513120-6	FSS-KT-2	FSO-KT-17			
175, 175A,B	All	MC0513120-5	FSS-KT-2	FSO-KT-17			
175C	17557003 thru 17557119	MC0513120-6	FSS-KT-2	FSO-KT-17			
177,177A,B	All	MC0513120-9	FSS-KT-2	FSO-KT-17			
177RG ¹	177RG0001 thru 177RG0282				0716111-4S, S1903-2S	FSS-KT-16	FSO-KT-4 ⁶
177RG ¹	177RG0283 thru 177RG0314	MC0716613-4	FSS-KT-18	FSO-KT-1			
177RG ¹	177RG0315 thru 177RG1051	MC0716613-5	FSS-KT-18	FSO-KT-1			
177RG ¹	177RG1052 thru 177RG1366	9851067-6S	FSS-KT-5	FSO-KT-13			
F177RG ¹	F177RG0001 thru F177RG0062				0716111-4S, S1903-2S	FSS-KT-16	FSO-KT-4 ⁶
F177RG ¹	F177RG0063 thru F177RG0077	MC0716613-4	FSS-KT-18	FSO-KT-1			

¹ Partial model eligibility

² Use FSS-KT-3 and FSO-KT-8 if equipped with air conditioner

³ Part number listed for reference only

⁴ The detent housing type must be verified by our technician before purchasing exchange unit from our stock. Please call 888-624-3153.

⁵ The "S", "SF" or "SP" suffix indicates a McFarlane repaired valve. The applicable Cessna part number is the McFarlane part number without the suffix. Reference the Cessna part number for all maintenance procedures.

⁶ FSO-KT-4 only works with valve S1903-2S

⁷ It is critical on model 172M, S/N 17260759 thru 17267584 that before ordering you identify the detent housing style your fuel valve has. See pictures at the top of page 162.

⁸ For aircraft flared threads use P/N 0716111-1SF. For aircraft with pipe threads use P/N 0716111-1SP

Eligibility continued on next page

Cessna Fuel Selector and Shut Off Valves and Kits continued from previous page							
Model	Serial Number	Fuel Selector Valve			Fuel Shut-Off Valve		
		McF P/N ⁴	Seal Kit	Repair Kit	McF P/N ⁴	Seal Kit	Repair Kit
F177RG ¹	F177RG0078 thru F177RG0160	MC0716613-5	FSS-KT-18	FSO-KT-1			
F177RG ¹	F177RG0161 thru F177RG0177	9851067-6S	FSS-KT-5	FSO-KT-13			
F177RG ¹	F177RG0161 thru F177RG0177	9851067-6S	FSS-KT-5	FSO-KT-13			
180,180A,B,C, D,E,F,G,H,J	30000 thru 18052770	0311070-1S	FSS-KT-6	FSO-KT-16			
180K	18052771 thru 18053203	9851067-5S	FSS-KT-5	FSO-KT-13			
182,182A,B,C,D	33000 thru 18253598	0311070-1S	FSS-KT-6	FSO-KT-16			
182E,F,G,H,J, K,L,M,N,P	18253599 thru 18265175	MC0716613-1	FSS-KT-18	FSO-KT-1			
182Q,R ¹	18265176 thru 18268055	9851067-5S	FSS-KT-5	FSO-KT-13			
182R ¹	18268056 thru 18268434	9851096-1S	FSS-KT-5	FSO-KT-6			
182R ¹ , 182S	18268435 and On	9851096-3S	FSS-KT-7	FSO-KT-9			
182T	18280945 thru 18299999	9851116-1S, 9851116-2S	FSS-KT-8	FSO-KT-23			
A182J,K,L,N ¹	A182-0001 thru A182-0148	0716613-1S	FSS-KT-18	FSO-KT-1			
F182P	F18200001 thru F18200025	MC0716613-1	FSS-KT-18	FSO-KT-1			
F182Q	F18200026 thru F18200169	9851067-5S	FSS-KT-5	FSO-KT-13			
FR182	FR18200001 thru FR18200070	9851067-4S	FSS-KT-5	FSO-KT-13			
R182 ¹ ,TR182 ¹	R18200001 thru R18201798	9851067-4S	FSS-KT-5	FSO-KT-13			
	R18201799 thru R18201999	9851096-2S	FSS-KT-4	FSO-KT-7			
	R18201799 thru R18202041	9851096-5S	FSS-KT-4	FSO-KT-7			
	18267716 thru 18268055	9851067-4S	FSS-KT-5	FSO-KT-13			
T182 ¹	18268056 thru 18268541	9851096-2S, 9851096-5S	FSS-KT-4	FSO-KT-7			
	T18208001 thru T18299999	9851116-1S, 9851116-2S	FSS-KT-8	FSO-KT-23			
185, 185A ¹	185-0001 thru 185-0413				0716109-1S	FSS-KT-17	FSO-KT-25
185A ¹	185-0414 thru 185-0512	Fuel Valve Control P/N MCS1241-1			0716111-1S ⁸	FSS-KT-16	FSO-KT-3
185B	185-0513 thru 185-0653	MC0716613-3	FSS-KT-18	FSO-KT-1	0716111-1S ⁸	FSS-KT-16	FSO-KT-3
		Fuel Valve Control P/N MCS1241-1					
185C	All	MC0716613-3	FSS-KT-18	FSO-KT-1	0716111-1S ⁸	FSS-KT-16	FSO-KT-3
185D,E, A185E ¹	185-0777 thru 185-1300	MC0716613-3	FSS-KT-18	FSO-KT-1	0716111-1S ⁸	FSS-KT-16	FSO-KT-3
					Fuel Shut Off Control P/N MCS1241-1		
A185E ¹	18501301 thru 18501599	MC0716613-4	FSS-KT-18	FSO-KT-1	0716111-1S ⁸	FSS-KT-16	FSO-KT-3
	18501600 thru 18501679	MC0716613-4	FSS-KT-18	FSO-KT-1	Fuel Shut Off Control P/N MCS1241-27		
A185E ¹ , A185F ¹	18501680 thru 18502310	MC0716613-4	FSS-KT-18	FSO-KT-1	0716111-1S ⁸	FSS-KT-16	FSO-KT-3
	18502311 thru 18503153	0716613-4S	FSS-KT-18	FSO-KT-1	0716111-1SP	FSS-KT-16	FSO-KT-3
	18503154 thru 18504328	9851067-5S	FSS-KT-5	FSO-KT-13	9851070-2S	FSS-KT-1	FSO-KT-2
	18504329 thru 18504424	9851096-1S	FSS-KT-5	FSO-KT-6	9851070-2S	FSS-KT-1	FSO-KT-2
A185F ¹	18504425 thru 18504448	9851096-4S	FSS-KT-5	FSO-KT-6	9851070-2S	FSS-KT-1	FSO-KT-2
188,188A,B, A188,A188A,A188B Without Wing Tanks	188-0001 thru 18802348				1616016-1S ⁵ 1H14-2S ³		
A188 With Wing Tanks	188-0446 thru 188-0572				0716111-1S ⁸	FSS-KT-16	FSO-KT-3
A188A ¹ , A188B ¹ With Wing Tanks	18800573 thru 18802348				0716111-5S	FSS-KT-16	FSO-KT-3
A188B ¹	18802349 thru 18802745T				0716111-5S	FSS-KT-16	FSO-KT-3
A188B ¹ ,T188C	18802746 thru 18803974T				9851070-2S	FSS-KT-1	FSO-KT-2

¹ Partial model eligibility
² Use FSS-KT-3 and FSO-KT-8 if equipped with air conditioner
³ Part number listed for reference only
⁴ The detent housing type must be verified by our technician before purchasing exchange unit from our stock. Please call 888-624-3153.
⁵ The "S", "SF" or "SP" suffix indicates a McFarlane repaired valve. The applicable Cessna part number is the McFarlane part number without the suffix. Reference the Cessna part number for all maintenance procedures.
⁶ FSO-KT-4 only works with valve S1903-2S
⁷ It is critical on model 172M, S/N 17260759 thru 17267584 that before ordering you identify the detent housing style your fuel valve has. See pictures at the top of page 162.
MC prefix P/Ns will be a new McFarlane manufactured part

Eligibility continued on next page

Fuel Sytem Fuel Selector and Fuel Shut-Off Valves

Cessna Fuel Selector and Shut Off Valves and Kits continued from previous page							
Model	Serial Number	Fuel Selector Valve			Fuel Shut-Off Valve		
		McF P/N ⁴	Seal Kit	Repair Kit	McF P/N ⁴	Seal Kit	Repair Kit
190 ¹ ,195 ¹ , 195A,B	7004 thru 16083 16084 thru 16183	0311070S 0311070-1S					
210-5 (205) ¹ , 210-5A (205A) ¹	205-0001 thru 205-0550	1216405-1S	FSS-KT-10	FSO-KT-21			
210-5A (205A) ¹	205-0552 thru 205-0555	1216405-1S	FSS-KT-10	FSO-KT-21			
	205-0551, 205-0556 thru 205-0577	HE764S	FSS-KT-9	FSO-KT-24			
206/U206, U206A,B,C,D,E,F ¹	U206-0001 thru U20602199	C291503S	FSS-KT-11	FSO-KT-10			
TU206F ¹ ,G ¹ , U206F ¹ ,G ¹	U20602200 thru U20605919	1216100-1S, C291503-0101S	FSS-KT-11	FSO-KT-11			
TU206A,B,C,D,E,F ¹	U206-0487 thru U20602199	C291503S	FSS-KT-11	FSO-KT-10			
TU206G ¹ , U206G ¹	U20605920 thru U20606439	1216100-2S	FSS-KT-11	FSO-KT-11			
	U20606440 thru U20607020	1216100-1S	FSS-KT-11	FSO-KT-11			
P206,P206A,B,C,D,E	All	C291503S	FSS-KT-11	FSO-KT-10			
TP206A,B,C,D,E	All	C291503S	FSS-KT-11	FSO-KT-10			
206H,T206H	20608001 thru T20699999	9851096-5S	FSS-KT-4	FSO-KT-7			
207,T207, 207A ¹ ,T207A ¹	20700001 thru 20700654	1216100-1S, C291503-0101S	FSS-KT-11	FSO-KT-11			
207A ¹ ,T207A ¹	20700655 thru 20700729	1216100-2S	FSS-KT-11	FSO-KT-11			
	20700730 thru 20700788	1216100-1S	FSS-KT-11	FSO-KT-11			
210,210A	57001 thru 21057840	1216001-1S	FSS-KT-12	FSO-KT-12			
210B,C	21057841 thru 21058220	1216405-1S	FSS-KT-10	FSO-KT-21			
210D,E,F, T210F	All	HE764S	FSS-KT-9	FSO-KT-24			
210G,H,J	All	C291503S	FSS-KT-11	FSO-KT-10			
T210G,H,J	T210-0198 thru T210-0392	C291503S	FSS-KT-11	FSO-KT-10			
210K,L,M,N ¹ , T210K,L,M,N ¹	21059200 thru 21064535	1216100-1S, C291503-0101S	FSS-KT-11	FSO-KT-11			
210N ¹ ,R/T210N ¹ ,R	21064536 thru 21065009	9851110-3S	FSS-KT-15	FSO-KT-22			
P210N ¹	P21000001 thru P21000760	1216100-1S, C291503-0101S	FSS-KT-11	FSO-KT-11			
P210N ¹ ,R	P21000761 thru P21000874	9851110-3S	FSS-KT-15	FSO-KT-22	0716111-4S		
310, 310B,C,D	35000 thru 39299	0855013-1S	FSS-KT-6	FSO-KT-18			
310F,G,H,I,J,J-1,K	310-0001 thru 310K0245	0855013-1S,	FSS-KT-6	FSO-KT-18			
		0855020-4S (Aux)	FSS-KT-19	FSO-KT-19			
320, 320-1, 320A,B,C	320-0001 thru 320C0073	0855013-1S	FSS-KT-6	FSO-KT-18			
		0855020-4S (Aux)	FSS-KT-19	FSO-KT-19			
320D	320D0001 thru 320D0130	0855020-5S	FSS-KT-20	FSO-KT-20			

¹ Partial model eligibility

² Use FSS-KT-3 and FSO-KT-8 if equipped with air conditioner

³ Part number listed for reference only

⁴ The detent housing type must be verified by our technician before purchasing exchange unit from our stock. Please call 888-624-3153.

⁵ The "S", "SF" or "SP" suffix indicates a McFarlane repaired valve. The applicable Cessna part number is the McFarlane part number without the suffix. Reference the Cessna part number for all maintenance procedures.

⁶ FSO-KT-4 only works with valve S1903-2S

⁷ It is critical on model 172M, S/N 17260759 thru 17267584 that before ordering you identify the detent housing style your fuel valve has. See pictures at the top of page 162.

MC prefix P/Ns will be a new McFarlane manufactured part

Maintenance Tip:

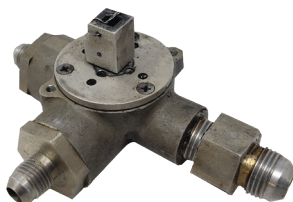
The fuel selector valve works in unscreened fuel. Contaminated fuel can cause valve seal damage. When fueling from possibly contaminated fuel sources McFarlane recommends the use of a fuel filter, such as Mr. Funnel or other filtering devices to reduce trash in the fuel system. See page 466 for details on Mr. Funnel.



Cessna 180, Early 182, 190 and 195 Series Fuel Selector Valves
Sign up for our Email Newsletter to hear when they've been FAA-PMA approved!

- Expanding our eligibility to cover Cessna 180, early 182, 190 and 195 series
- We will have PMA replacement parts for these
- Save \$\$\$

Coming Soon



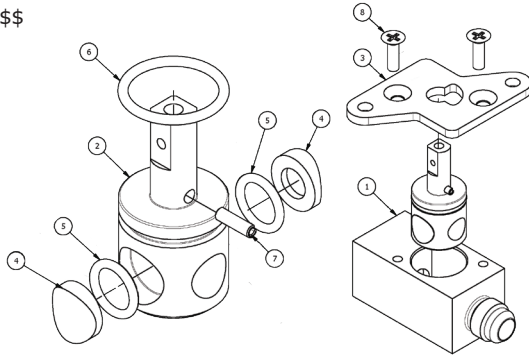
Fuel Valve for PA-28
P/N 491-947



Replacement Parts for 150-152 Fuel Selector Valves and 185 Shut-Off Valves

Replacement Parts for McFarlane and Cessna original 150, 152 and 185 Valves

- Cover, rotors, bodies, o-rings, roll pins, and seals in-stock!
- Unique and common components for P/N MC9851078-4 and MC9851070-2 below
- Save \$\$\$



Replaces your old sticky brass valves!

Cessna 150□, 150A,B,C,D,E,F,G,J,K,L,M□
Serial Number 17770 thru 15078505

Replacement Part		Part Number
Highest Assembly	Fuel Selector Valve	MC9851078-4
Unique Components	Body #1	MC9851077-1
	Rotor #2	MC9851072-3
	Cover #3	MC9851092-2
Common Components	Seal #4	MC9851073-2
	O-ring #5	MCM83248/1-011
	O-ring #6	MCM83248/1-016
	Roll Pin #7	MS06562-22

Cessna 150M□
Serial Number 15078506 thru 15079405

Replacement Part		Part Number
Highest Assembly	Fuel Selector Valve	MC9851070-2
Unique Components	Body #1	MC9851071-2
	Rotor #2	MC9851072-2
	Cover #3	MC9851074-1
Common Components	Seal #4	MC9851073-2
	O-ring #5	MCM83248/1-011
	O-ring #6	MCM83248/1-016
	Roll Pin #7	MS06562-22

Cessna A150K,L,M□
Serial Number A1500001 thru A1500684

Replacement Part		Part Number
Highest Assembly	Fuel Selector Valve	MC9851078-4
Unique Components	Body #1	MC9851077-1
	Rotor #2	MC9851072-3
	Cover #3	MC9851092-2
Common Components	Seal #4	MC9851073-2
	O-ring #5	MCM83248/1-011
	O-ring #6	MCM83248/1-016
	Roll Pin #7	MS06562-22

Cessna A150M□
Serial Number A1500685 thru A1500734

Replacement Part		Part Number
Highest Assembly	Fuel Selector Valve	MC9851070-2
Unique Components	Body #1	MC9851071-2
	Rotor #2	MC9851072-2
	Cover #3	MC9851074-1
Common Components	Seal #4	MC9851073-2
	O-ring #5	MCM83248/1-011
	O-ring #6	MCM83248/1-016
	Roll Pin #7	MS06562-22

Cessna F150F,G,H,J,K,L,M□
Serial Number F150-0001 thru F15001338

Replacement Part		Part Number
Highest Assembly	Fuel Selector Valve	MC9851078-4
Unique Components	Body #1	MC9851077-1
	Rotor #2	MC9851072-3
	Cover #3	MC9851092-2
Common Components	Seal #4	MC9851073-2
	O-ring #5	MCM83248/1-011
	O-ring #6	MCM83248/1-016
	Roll Pin #7	MS06562-22

Continued in next column

Continued from previous column

Cessna F150M□
Serial Number F15001339 thru F15001428

Replacement Part		Part Number
Highest Assembly	Fuel Selector Valve	MC9851070-2
Unique Components	Body #1	MC9851071-2
	Rotor #2	MC9851072-2
	Cover #3	MC9851074-1
Common Components	Seal #4	MC9851073-2
	O-ring #5	MCM83248/1-011
	O-ring #6	MCM83248/1-016
	Roll Pin #7	MS06562-22

Cessna FA150K,L□,M□
Serial Number FA1500001 thru FA1500311

Replacement Part		Part Number
Highest Assembly	Fuel Selector Valve	MC9851078-4
Unique Components	Body #1	MC9851077-1
	Rotor #2	MC9851072-3
	Cover #3	MC9851092-2
Common Components	Seal #4	MC9851073-2
	O-ring #5	MCM83248/1-011
	O-ring #6	MCM83248/1-016
	Roll Pin #7	MS06562-22

Cessna FA150M□
Serial Number FA1500312 thru FA1500336

Replacement Part		Part Number
Highest Assembly	Fuel Selector Valve	MC9851070-2
Unique Components	Body #1	MC9851071-2
	Rotor #2	MC9851072-2
	Cover #3	MC9851074-1
Common Components	Seal #4	MC9851073-2
	O-ring #5	MCM83248/1-011
	O-ring #6	MCM83248/1-016
	Roll Pin #7	MS06562-22

Cessna 152/A152/F152/FA152
Serial Number All

Replacement Part		Part Number
Highest Assembly	Fuel Selector Valve	MC9851070-2
Unique Components	Body #1	MC9851071-2
	Rotor #2	MC9851072-2
	Cover #3	MC9851074-1
Common Components	Seal #4	MC9851073-2
	O-ring #5	MCM83248/1-011
	O-ring #6	MCM83248/1-016
	Roll Pin #7	MS06562-22

Cessna A185F
Serial Number 18403154 thru 18504448

Replacement Part		Part Number
Highest Assembly	Fuel Selector Valve	MC9851070-2
Unique Components	Body #1	MC9851071-2
	Rotor #2	MC9851072-2
	Cover #3	MC9851074-1
Common Components	Seal #4	MC9851073-2
	O-ring #5	MCM83248/1-011
	O-ring #6	MCM83248/1-016
	Roll Pin #7	MS06562-22

Notes:

- 1 Partial model eligibility
- 2 Includes aircraft equipped w/FKA150-2311 & FKA150-2316
- 3 Indicates quantity of two per higher assembly

Replacement Parts for McFarlane Cessna Fuel Selector Valves

For McFarlane FAA-PMA 170, 172, 175 and 177 series Fuel Valves

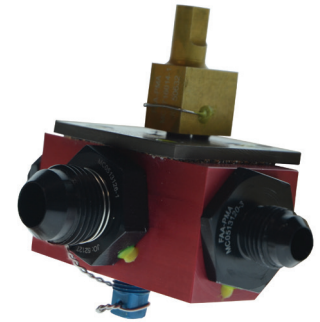
NEW

- Rotors, valves, springs, roll pins, screws, washers and more, **all available today!**
- Unique and common components for McFarlane MC0513120-5, MC0513120-6, MC0513120-8, MC0513120-9, and MC0513120-200

Model	Serial Number	Highest Assembly	Highest Assembly	Unique Components
		Fuel Selector Valve	Position Housing	Fuel Outlet Fitting
170B 1	20286 thru 27169	MC0513120-5	MC0513124-2	MC0513126
172, 172A,B,C	28000 thru 17249544	MC0513120-5	MC0513124-2	MC0513126
172D,E	17249545 thru 17251822	MC0513120-6	MC0513124-2	MC0513126-1
172F,G,H,I,K,L,M 1	17251823 thru 17263458	MC0513120-8	MC0513124-3	MC0513126-1
172M 1	17263459 thru 17267584	MC0513120-200	MC0516011-2	MC0513126-1
F172D,E	F172-0001 thru F172-0085	MC0513120-6	MC0513124-2	MC0513126-1
F172F,G,H,K,L,M 1	F172-0086 thru F17201234	MC0513120-8	MC0513124-3	MC0513126-1
F172M 1	F17201235 thru F17201514	MC0513120-200	MC0516011-2	MC0513126-1
FR172E,F,G,H,J 1	FR17200001 thru FR17200530	MC0513120-8	MC0513124-3	MC0513126-1
	FR17200531 thru FR17200590	MC0513120-200	MC0516011-2	MC0513126-1
R172K, FR172K	All	MC0513120-200	MC0516011-2	MC0513126-1
P172, FP172	All	MC0513120-6	MC0513124-2	MC0513126-1
175, 175A,B	All	MC0513120-5	MC0513124-2	MC0513126
175C	All	MC0513120-6	MC0513124-2	MC0513126-1
177,177A,B	All	MC0513120-9	MC1716014-1	MC0513126-1

Notes:

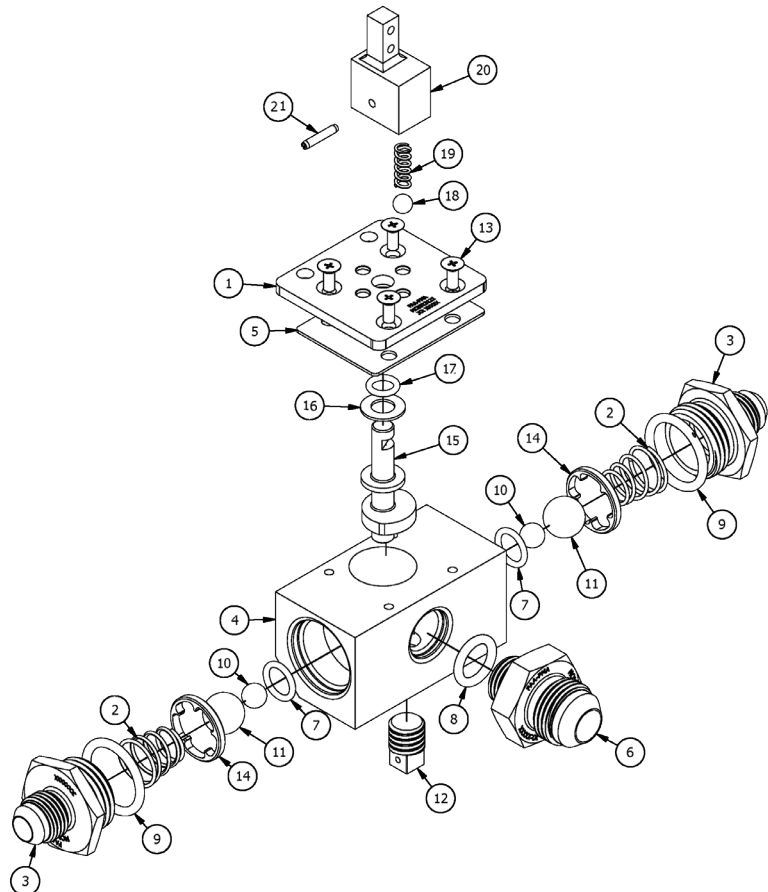
1 Partial model eligibility



Common Components and Quantities used on all models:			
IPC Graphic	Description	Part Number	Qty Per Aircraft
1	Cover Plate	MC0513122	1
2	Valve Spring	MC0513120-2	2
3	Fuel Inlet Fitting	MC0513120-3	2
4	Valve Body	MC0513121	1
5	Cover Gasket	MC0513125	1
7	Valve O-ring	MCM83248/1-012	2
8	Outlet O-Ring	MCM83248/1-111	1
9	Inlet O-ring	MCM83248/1-116	2
10	Lifter Ball	MCS272-209	2
11	Valve Ball	MCS272-215	2
12	Drain Plug	MS20913-1D	1
13	Cover Screw	MS24693S25	4
14	Guide Insert	7715 1	2
15	Fuel Selector Cam	MC0513123	1
16	Thrust Washer	NAS1149C0432R	1
17	Cam O-ring	MS29513-010	1
18	Positioning Ball	MCS272-207	1
19	Positioning Spring	MC0513120-1	1
21	Roll Pin	MS16562-213	1

Notes:

1 McFarlane fuel selector valves only



Replacement Parts for McFarlane Cessna Fuel Selector Valves continued
For McFarlane 177, 182 and 185 series Fuel Valves

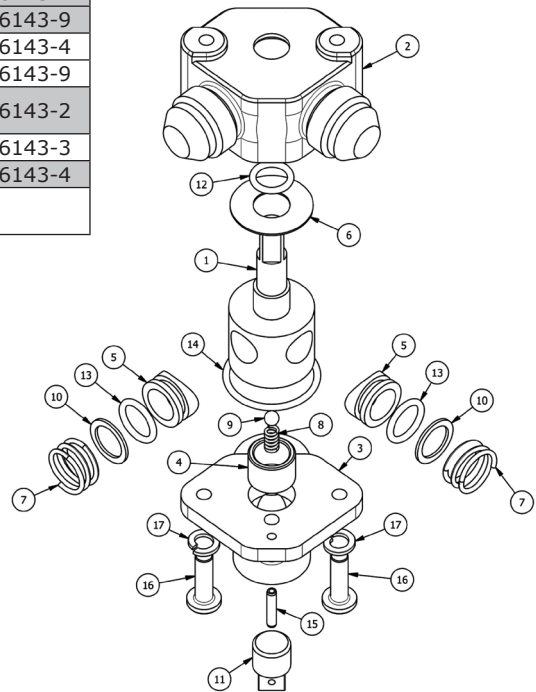
- Unique and common components for McFarlane MC0716613-1, MC0716613-3, MC0716613-4, and MC0716613-5 available below
- In stock and affordable!

Model	Serial Number	Highest Assembly	Unique Component
		Fuel Selector Valve	Rotor
177RG	177RG0283 thru 177RG0314	MC0716613-4	MC0716143-4
	177RG0315 thru 177RG1051	MC0716613-5	MC0716143-9
F177RG	F177RG0063 thru F177RG0077	MC0716613-4	MC0716143-4
	F177RG0078 thru F177RG0160	MC0716613-5	MC0716143-9
182E,F,G,H,J,K, L,M,N,P, F182P	All	MC0716613-1	MC0716143-2
185B,C,D,E, A185E1	185-0513 thru 185-1300	MC0716613-3	MC0716143-3
A185E1,F	185-1301 thru 18502310	MC0716613-4	MC0716143-4

Notes:

1 Partial model eligibility

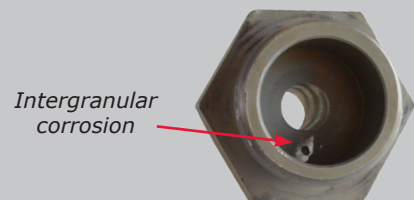
IPC Graphic	Common components and quantities used on all models:	
2	1 Valve Body	MC0716144-1
3	1 Valve Sump	MC0716145-1
4	1 Valve Bushing	MC0716146-1
5	2 Rotor Seal	MC1216107-4
6	1 Thrust Washer	MCS1438-14
7	2 Valve Spring	MC1216110-4
8	1 Positioning Spring	MC1216110-5
9	1 Positioning Ball	MCS272-5
10	2 Seal Washer	MCS2385-4
11	1 Drain Plug	MS20913-1D
12	1 Upper Rotor O-Ring	MCM83248/1-012
13	2 Rotor Seal O-Ring	MCM83248/1-013
14	1 Lower Rotor O-ring	MCM83248/1-021
15	1 Roll Pin	MS16562-65
16	2 Screw	MS16562-63
17	2 Lock Washer	MS35338-43



Fuel Valve Intergranular Corrosion

Intergranular Corrosion — Found During Fuel Valve Overhaul and Repair

Fuel Valves can produce intergranular corrosion, which occurs from a weakened area of the valve that was improperly heat treated during the manufacturing process. Over time, the area that was improperly heat treated is especially prone to corroding from the inside out. Once the corrosion hits the surface and exfoliates, leaking occurs and repair is needed. At that point, your Fuel Valve needs repaired. Intergranular corrosion is very common and often found in many valves during overhaul and repair.



Fuel Selector Valve Cam and Bearing for Cessna Aircraft

Improved corrosion protection with new aluminum bearing with the cam

- Anodized aluminum cam
- Aluminum bearing eliminates galvanic corrosion!
- Save \$\$\$!

SAVE \$\$\$

Aircraft	Cam	Bearing
	MC0513123	MCS1003-9A
170B	•	
172, 172A,B,C,D,E,F,G,H,I,K,L	•	•
172M	•	•
F172D,E,F,G,H,K,L	•	•
F172M	•	•
FP172, P172D	•	•
R172E,F,G,H	•	•
R172K	•	•
FR172E,F,G,H	•	•
FR172J,K	•	•
175, 175A,B,C	•	•
177, 177A,B	•	•
180F,G,H,J	•	•

