

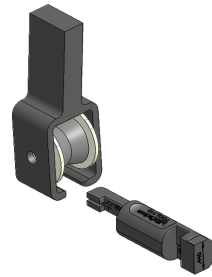
Seat Roller Housing Gauge for Cessna Aircraft

Part Number TOOL110

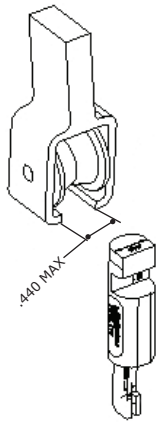
- Hardened Stainless Steel
- Save time! Two times faster than calipers
- Step by step instructions
- Measures all three dimensions

Checks Cessna seat roller housing limits as per FAA AD 2011-10-09

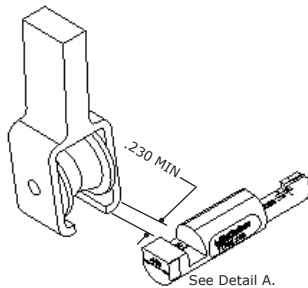
The McFarlane Seat Roller Housing Gauge is designed to facilitate inspection of seat roller housings for wear in Cessna aircraft as required by mandatory FAA AD 2011-10-09. This gauge simplifies determining whether the housing is in or out of tolerance by allowing the areas of concern to be gauged as opposed to measuring each individual attribute on each seat roller housing with calipers.



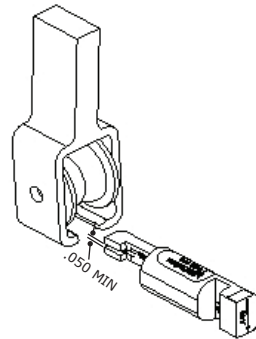
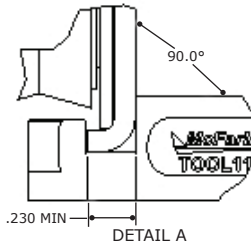
P/N TOOL110



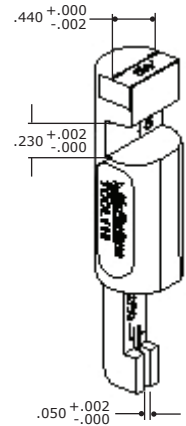
Step 1.
.440 gauge surfaces must not enter space between housing tangs.



Step 2.
The bend area of the tang must not enter the space on the gauge marked .230.
See Detail A.



Step 3.
The .050 space on the gauge must not fit on the worn area of the tang.



To calibrate; ensure gauge dimensions are within the tolerances shown.

.440 + .000/- .002
.230 + .002/- .000
.050 + .002/- .000

Coming Soon: FAA-PMA Seat Roller Housings!